


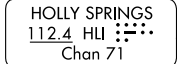
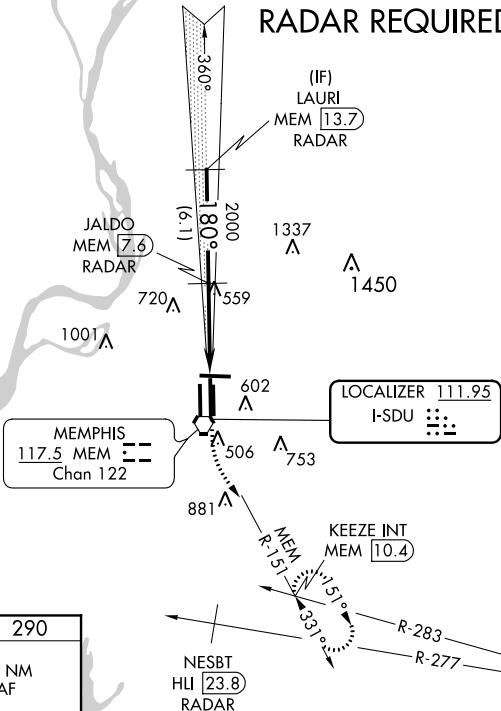
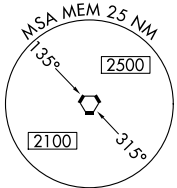
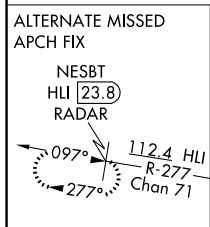
ILS or LOC RWY 18C
MEMPHIS INTL (MEM)

- | | | |
|---|---|---|
| <p>T Simultaneous approach authorized.
 A DME or RADAR required.
 For inop ALS, increase S-ILS 18C all Cats visibility to 1/4 SM.</p> | <p>MALSR</p>  | <p>MISSED APPROACH: Climb to 900 then climbing left turn to 5000 on MEM VORTAC R-151 to KEEZE INT/MEM 10.4 DME and hold, continue climb-in-hold to 5000.</p> |
|---|---|---|

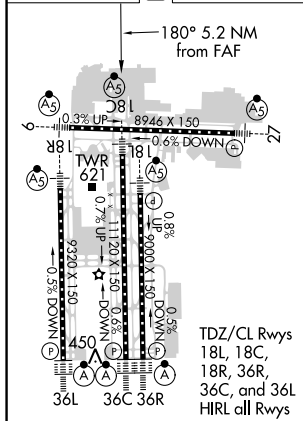
D-ATIS	127.75
--------	--------

RADAR REQUIRED

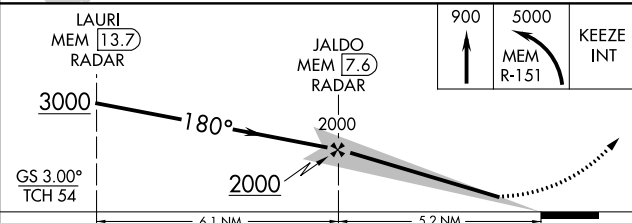
CLNC DEL 125.2	CPDLC
--------------------------	-------




ELEV 341	D	TDZE 290
----------	----------	----------



FAF to MAP 5.2 NM					
Knots	60	90	120	150	180
Min:Sec	5:12	3:28	2:36	2:05	1:44



CATEGORY	A	B	C	D	E
S-1LS 18C	657/40 367 (400-¾)				
S-LOC 18C	860/24 570 (600-½)	860/50 570 (600-1)	860/60 570 (600-1¼)	860-1½ 570 (600-1½)	
 CIRCLING	940-1 599 (600-1)	940-1½ 599 (600-1½)	1020-2¼ 679 (700-2¼)	1140-2¾ 799 (800-2¾)	

SE-1, 03 DEC 2020 to 31 DEC 2020

SE-1, 03 DEC 2020 to 31 DEC 2020