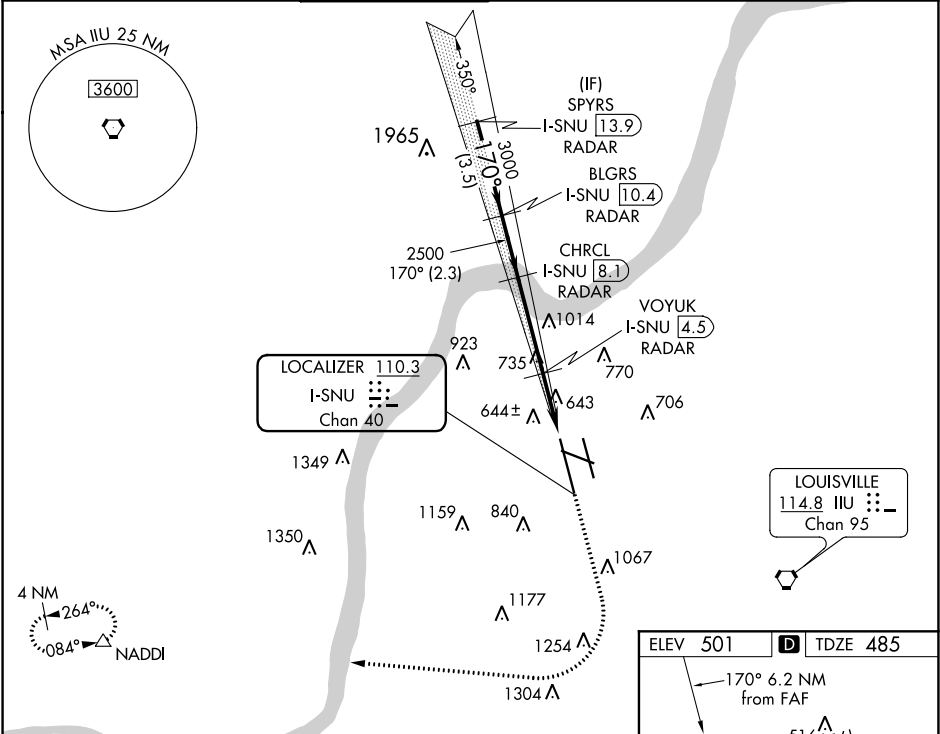


LOC/DME I-SNU <b>110.3</b> Chan <b>40</b>	APP CRS <b>170°</b>	Rwy Idg <b>10000</b> TDZE <b>485</b> Apt Elev <b>501</b>
---	------------------------	--

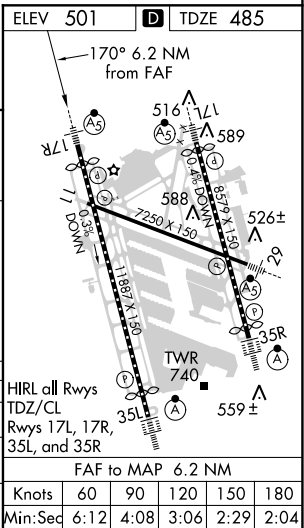
ILS or LOC RWY 17R  
LOUISVILLE MUHAMMAD ALI INTL (SDF)

RNAV 1-GPS required. DME or RADAR required.	MALSR 	MISSED APPROACH: Climb to 1600 then climbing right turn to 3000 direct NADDI and hold.
Circling Rwy 11 NA at night. Simultaneous approach authorized. For inop ALS, increase S-LOC 17R Cat C/D visibility to RVR 6000.		

D-ATIS <b>118.725</b>	LOUISVILLE APP CON <b>132.075 327.0</b>	LOUISVILLE TOWER <b>124.2 257.8</b>	GND CON <b>121.7 348.6</b>	CLNC DEL <b>126.1 275.8</b>	CPDLC
--------------------------	--	--	-------------------------------	--------------------------------	-------



VGSI and ILS glidepath not coincident (VGSI Angle 3.00/TCH 75).				
CATEGORY	A	B	C	D
S-ILS 17R	685/18 200 (200-½)			
S-LOC 17R	900/24	415 (500-½)	900/40	415 (500-¾)
CIRCLING	1040-1 539 (600-1)	1140-1 639 (700-1)	1160-1¾ 659 (700-1¾)	1400-3 899 (900-3)



SE-1, 03 DEC 2020 to 31 DEC 2020

SE-1, 03 DEC 2020 to 31 DEC 2020