


WAAS CH 90210 W23B	APP CRS 231°	Rwy Idg 8600 TDZE 965 Apt Elev 981
--	------------------------	---

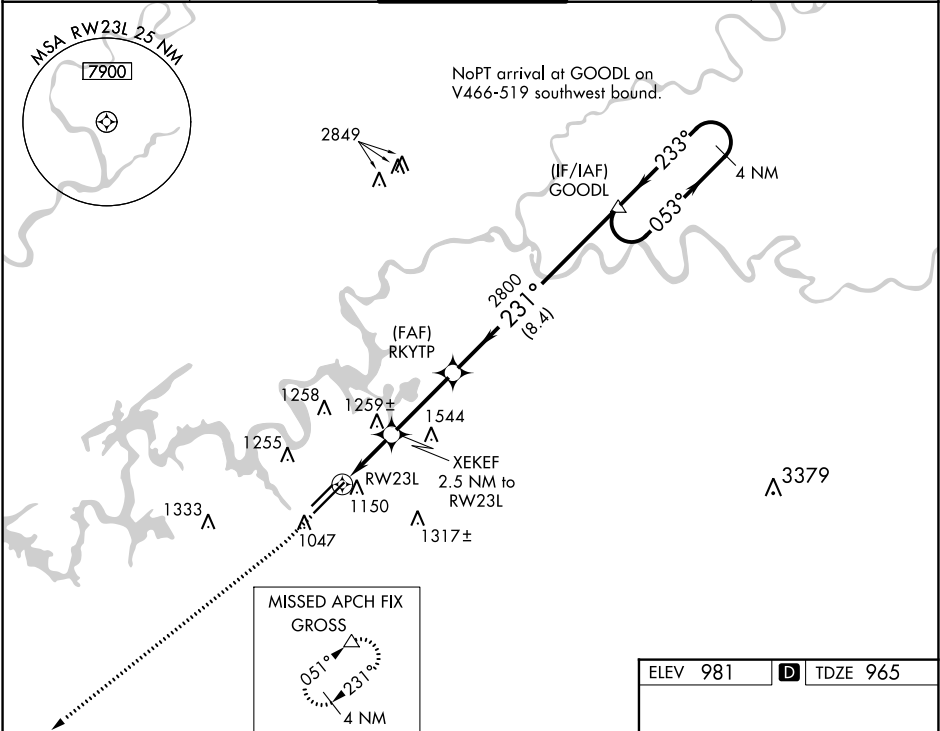
RNAV (GPS) RWY 23L
MC GHEE TYSON(T'YS)



For uncompensated Baro-VNAV systems, LNAV/VNAV NA below -10° C (14° F) or above 54° C (130° F). DME/DME RNP-0.3 NA.

MISSED APPROACH: Climb to 1600 then climb to 3000 direct GROSS and hold.

ATIS 128.35	KNOXVILLE APP CON 123.9 360.8	KNOXVILLE TOWER 121.2 257.8	GND CON 121.9 348.6	CLNC DEL 121.65
-----------------------	---	---------------------------------------	-------------------------------	---------------------------



1600

3000

GROSS

↑

↑

△

*LNAV only.

RW23L

XEKEF 2.5 NM to RW23L

RKYTP

GOODL

4 NM Holding Pattern

231°

051°

2800

3500

GP 3.00° TCH 52

1.6 NM


0.9 NM

3.1 NM

8.4 NM

CATEGORY	A	B	C	D
LPV DA		1165/40	200 (200-¾)	
LNAV/VNAV DA		1383-1⅓	418 (500-1⅓)	
LNAV MDA	1520/55	555 (600-1)	1520-1⅓	555 (600-1⅓)
CIRCLING	1520-1 539 (600-1)	1620-1 639 (700-1)	1660-2 679 (700-2)	1900-3 919 (1000-3)

ELEV 981

 TDZE 965

231° to RW23L

1144±

TWR 1094

6005 X 150

6022 X 150

8000 X 50

1068

GP 3.00° TCH 52

HIRL Rwy 5L-23R and 5R-23L

REIL Rwy 5R, 23L, and 23R

TDZ/CL Rwy 5R

SE-1, 03 DEC 2020 to 31 DEC 2020

SE-1, 03 DEC 2020 to 31 DEC 2020