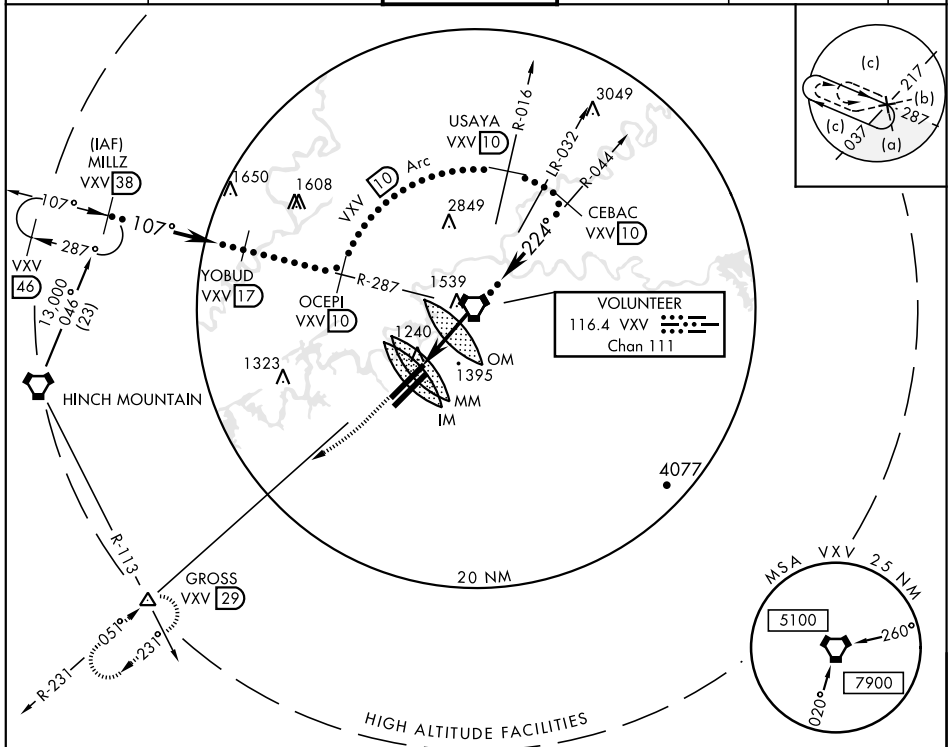


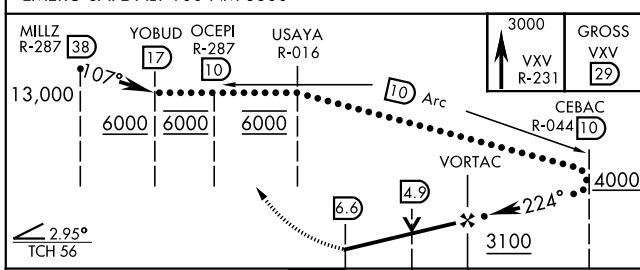
HI-VOR/DME or TACAN RWY 23R

<p>T *When ALS inop, increase CAT C vis to 1½ miles, CAT D vis to 1¾ miles, CAT E vis to 2 miles.</p>	<p>MISSED APPROACH: Climb to 3000 on VXX VORTAC R-231 to GROSS Int/29 DME and hold.</p>
--	--

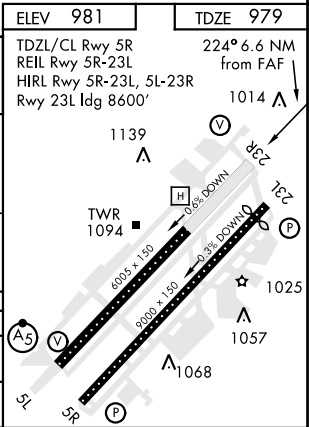
ATIS 128.35	KNOXVILLE APP CON 118.0 360.8	KNOXVILLE TOWER 121.2 257.8	GND CON 121.9 348.6	CLNC DEL 121.65	ASR
----------------	----------------------------------	--------------------------------	------------------------	--------------------	-----



EMERG SAFE ALT 100 NM 8800



CATEGORY	C	D	E
S-23R *	1580/50 599 (600-1)	1580/60 599 (600-1¼)	1580-1½ 599 (600-1½)
CIRCLING	1580-1½ 599 (600-1½)	1620-2 639 (700-2)	1900-3 919 (1000-3)



KNOXVILLE, TENNESSEE	35°49'N-84°00'W	KNOXVILLE/ McGHEE TYSON	(KTYS)
----------------------	-----------------	-------------------------	--------

Amdt 3 18200

HI-VOR/DME or TACAN RWY 23R

SE-1, 03 DEC 2020 to 31 DEC 2020

SE-1 03 DEC 2020 to 31 DEC 2020