

VOR/DME RWY 36

VOR/DME FTK 109.6 Chan 33	APCH CRS 349°	Rwy Idg 5184 TDZE 741 Arpt Elev 754
---	-------------------------	--

AL-151 [USA]

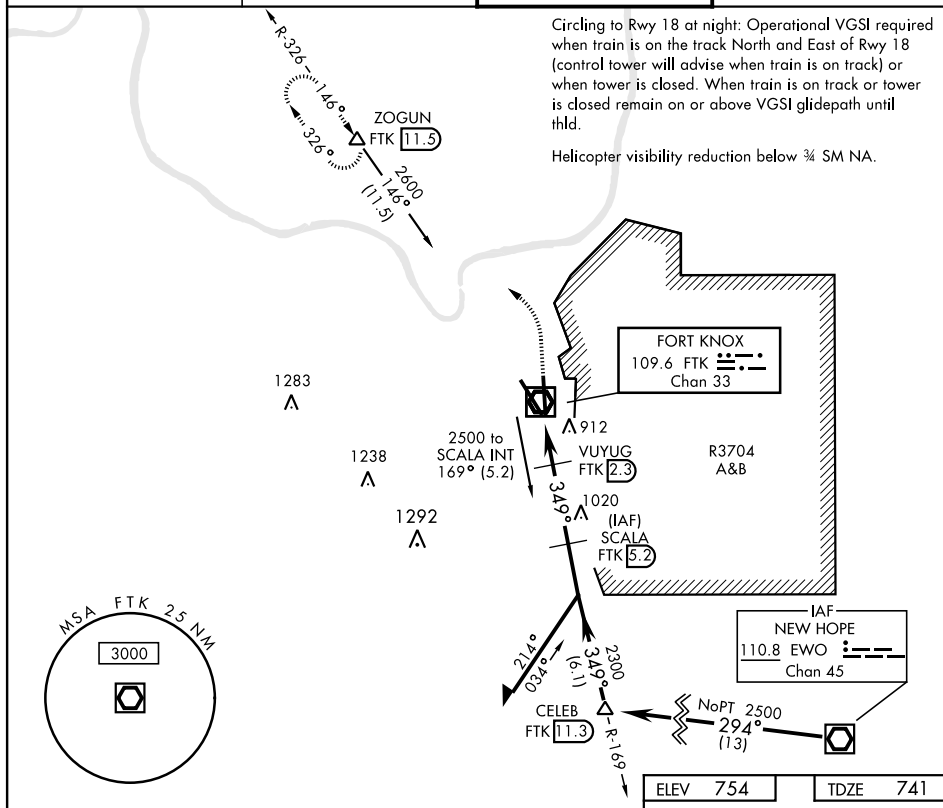
GODMAN AAF (KFTK)

* When ALS inop increase CAT D vis to 13/8 mile.
** Circling not authorized E of Rwy 18-36.

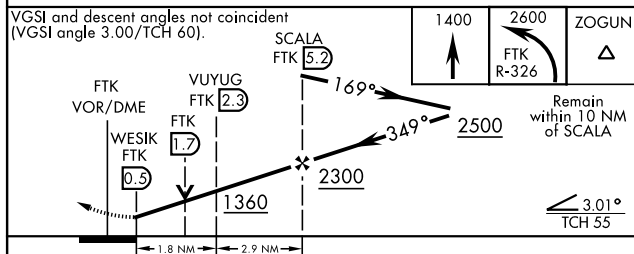
ODALS

MISSED APPROACH: Climb to 1400, then climbing left turn to 2600 on FTK VOR/DME R-326 to ZOGUN INT/FTK 11.5 DME and hold.

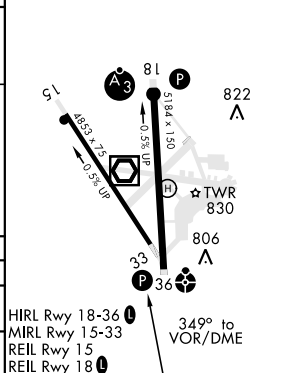
ATIS★ 109.6	LOUISVILLE APP CON 132.075 327.0	GODMAN TOWER★ 133.35 (CTAF) 0	GND CON 121.9 239.3
------------------------------	---	--	--------------------------------------



VGSI and descent angles not coincident (VGSI angle 3.00/TCH 60).



CATEGORY	A	B	C	D
S-36*	1180- $\frac{3}{4}$ 439 (500- $\frac{3}{4}$)		1180-1 $\frac{1}{8}$ 439 (500-1 $\frac{1}{8}$)	
C CIRCLING**	1300-1 545 (600-1)		1300-1 $\frac{1}{2}$ 545 (600-1 $\frac{1}{2}$)	1320-2 565 (600-2)



FORT KNOX, KENTUCKY

37°54'N-85°58'W

GODMAN AAF (KFTK)

Amdt 1B 08OCT20

VOR/DME RWY 36

SE-1, 03 DEC 2020 to 31 DEC 2020

SE-1, 03 DEC 2020 to 31 DEC 2020