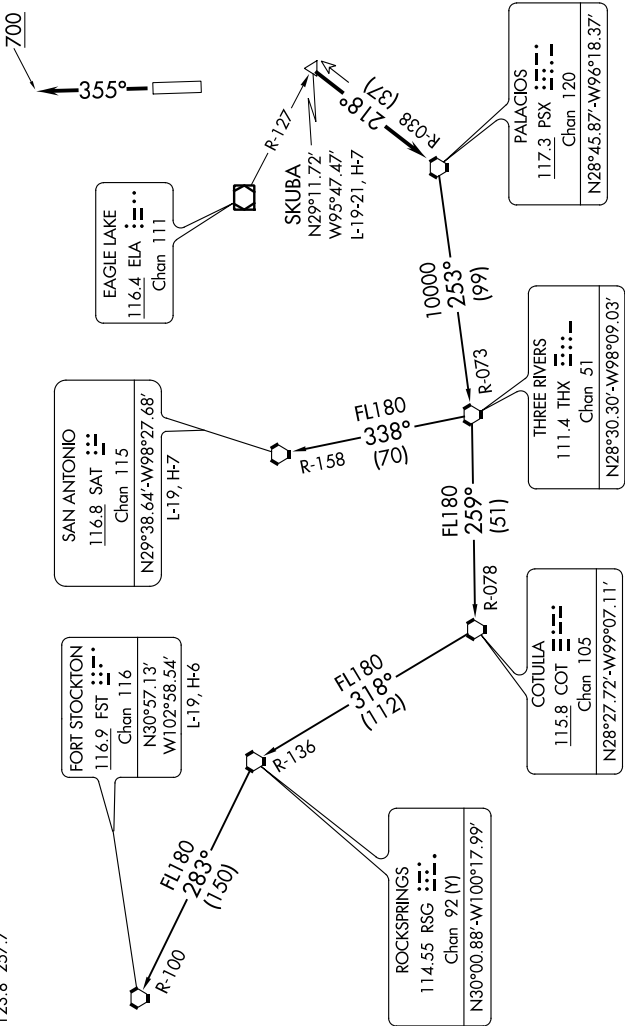


SC-5, 03 DEC 2020 to 31 DEC 2020

TOP ALTITUDE:  
ASSIGNED BY ATC

TAKEOFF MINIMUMS  
Rwy 18, 36: Standard.

ATIS  
119.525  
CLNC DEL  
132.075  
GND CON  
132.075  
EXECUTIVE TOWER ★  
126.975 (CTAF)  
HOUSTON DEP CON  
123.8 257.7



(NARRATIVE ON FOLLOWING PAGE)

NOTE: RADAR required.  
NOTE: Chart not to scale.

SC-5, 03 DEC 2020 to 31 DEC 2020