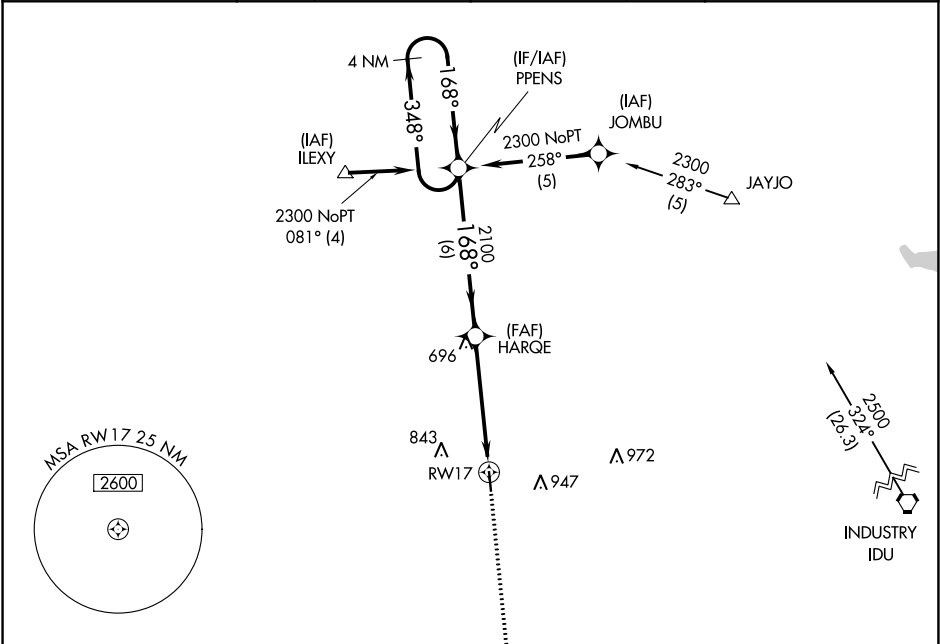


APP CRS	Rwy Idg	4000
168°	TDZE	484
	Apt Elev	484

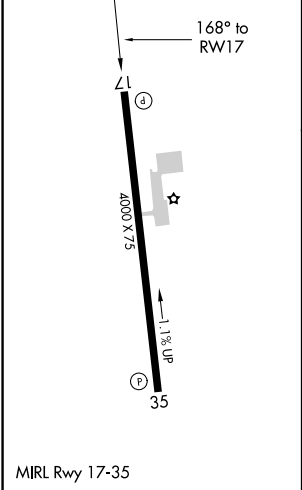
RNAV (GPS) RWY 17
GIDDINGS-LEE COUNTY (GYB)

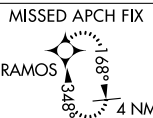

<p>▼ DME/DME RNP-0.3 NA. Helicopter visibility reduction below 1 SM NA.</p> <p>▲ Procedure NA at night. When local altimeter setting not received, use Austin-Bergstrom Intl altimeter setting and increase all MDA 100 feet; increase LNAV Cat C visibility ¼ mile.</p>	<p>MISSED APPROACH: Climb to 2500 direct RAMOS and hold.</p>
--	--

<p>AWOS-3 119.225</p>	<p>AUSTIN APP CON 127.225 317.65</p>	<p>UNICOM 123.05 (CTAF)</p>
---------------------------	--	---------------------------------



ELEV 484	TDZE 484
----------	----------



<div>MISSED APCH FIX</div> <div></div> <div>RAMOS</div>		<div>4 NM</div> <div>Holding Pattern</div>		<div>VGSI and descent angles not coincident (VGSI Angle 3.00/TCH 28).</div>		<div>2500</div> <div>RAMOS</div> <div></div>	
<div>2300</div> <div>← 348°</div> <div>168° →</div>		<div>PPENS</div>		<div>HARQE</div> <div>2100</div> <div>168°</div> <div>3.04° TCH 40</div> <div>RW17</div>			
		<div>6 NM</div>		<div>4.9 NM</div>			
CATEGORY	A		B		C		D
LNAV MDA	940-1 456 (500-1)		940-1¼ 456 (500-1¼)		940-1½ 456 (500-1½)		NA
CIRCLING	940-1 456 (500-1)		940-1½ 456 (500-1½)		940-1½ 456 (500-1½)		NA