

WAAS
CH **56429**
W14A

APP CRS
135°

Rwy Idg
TDZE **678**
Apt Elev **678**

RNAV (GPS) RWY 14

CHEROKEE COUNTY (J50)

▼

▲

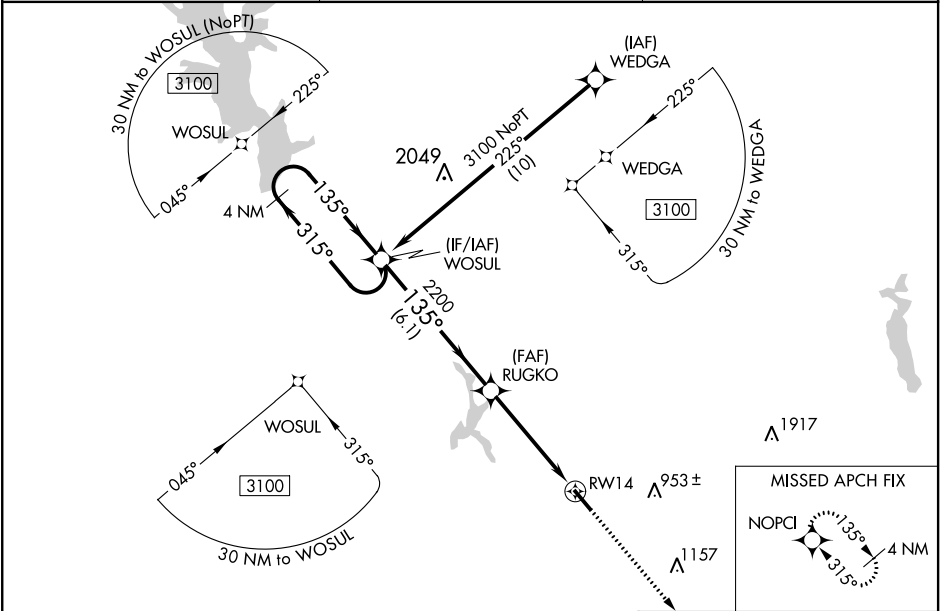
Baro-VNAV NA when using Nacogdoches altimeter setting. For uncompensated Baro-VNAV systems, LNAV/VNAV NA below -16°C (4°F) or above 54°C (130°F). When local altimeter setting not received, use Nacogdoches altimeter setting and increase DA 118 feet, increase MDA 120 feet and LPV visibility all Cats ½ mile, LNAV/VNAV visibility all Cats ¼ mile, LNAV visibility Cat C ¾ mile. DME/DME RNP-0.3 NA. VDP NA with Nacogdoches altimeter setting.

MISSED APPROACH: Climb to 3100 direct NOPCI and hold.

AWOS-3
119.075

LONGVIEW APP CON ★
128.75 379.15

UNICOM
122.7 (CTAF) 0



ELEV 678

TDZE 678

4 NM Holding Pattern WOSUL

3100 ← 315° → 135° → 135° → 2200

GP 3.00° TCH 30

RUGKO 2200

*1.2 NM to RW14

RW14

*LNAV only.

3100 ↑ NOPCI

135° to RW14

508 X 75

732

0.4% Up

CATEGORY	A	B	C	D
LPV DA	928-1	250 (300-1)		NA
LNAV/VNAV DA	928-1	250 (300-1)		NA
LNAV MDA	1080-1	402 (500-1)	1080-1½ 402 (500-1½)	NA
CIRCLING	1080-1 402 (500-1)	1140-1 462 (500-1)	1140-1½ 462 (500-1½)	NA

REIL Rwy 14

MIRL Rwy 14-32 0