

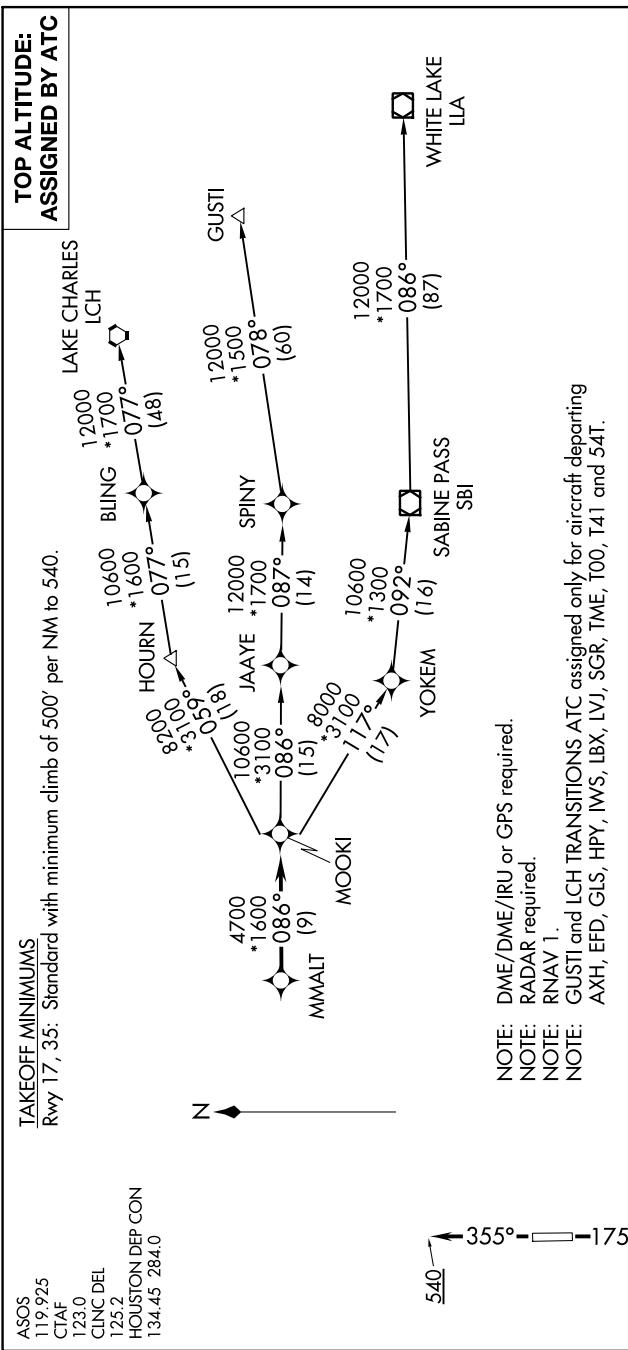
SC-5, 03 DEC 2020 to 31 DEC 2020

ASOS
119.925
CTAF
123.0
CINC DEL
125.2
HOUSTON DEP CON
134.45 284.0

TAKEOFF MINIMUMS
Rwy 17, 35: Standard with minimum climb of 500' per NM to 540.

(MMALT5.MMALT) 19115
AL-6453 (FAA)
TEXAS GULF COAST RGNL (LBX)
ANGLETON/LAKE JACKSON, TEXAS

MMALT FIVE DEPARTURE (RNAV)



MMALT FIVE DEPARTURE (RNAV)
(MMALT5.MMALT) 25APR19

DEPARTURE ROUTE DESCRIPTION

TAKEOFF Rwy 17: Climb on heading 175° to 540 for RADAR vectors to MMALT, thence. . . .
TAKEOFF Rwy 35: Climb on heading 355° to 540 for RADAR vectors to MMALT, thence. . . .
. . . on track 086° to MOOKI, then on (transition). Maintain ATC assigned altitude.
Expect filed altitude 10 minutes after departure.

GUSTI TRANSITION (MMALT5.GUSTI)
LAKE CHARLES TRANSITION (MMALT5.LCH)
WHITE LAKE TRANSITION (MMALT5.LLA)

NOTE: Chart not to scale.

SC-5, 03 DEC 2020 to 31 DEC 2020