

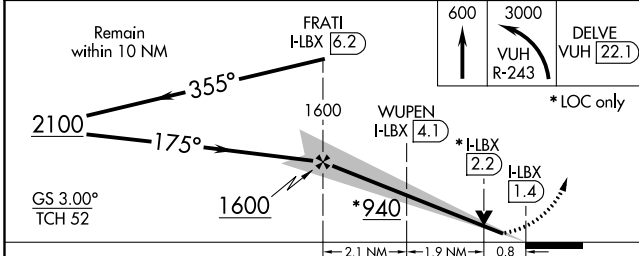
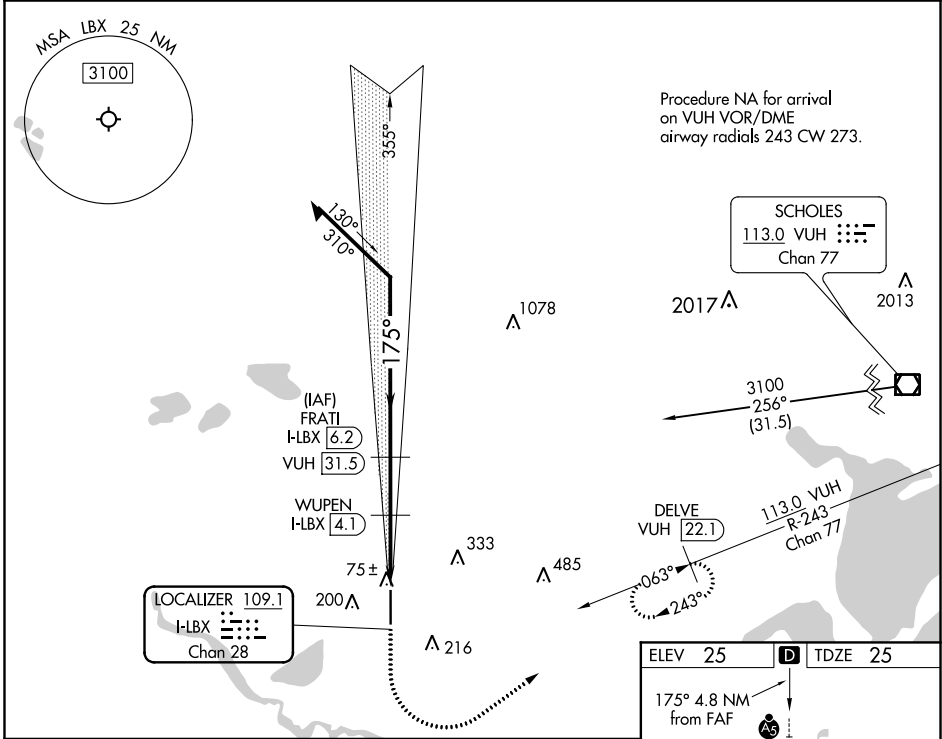
LOC/DME I-LBX	APP CRS	Rwy Idg	7000
109.1	175°	TDZE	25
Chan 28		Apt Elev	25

ILS or LOC RWY 17

TEXAS GULF COAST RGNL (LBX)

DME required.	MALSR	MISSED APPROACH: Climb to 600 then climbing left turn to 3000 on VUH VOR/DME R-243 to DELVE/VUH 22.1 DME and hold.
For inop ALS, increase S-LOC 17 Cat C/D visibility to ¾ SM. Circling NA east of Rwy 17-35.		

ASOS	HOUSTON APP CON	CLNC DEL	UNICOM
119.925	134.45 284.0	125.2	123.0 (CTAF) 0



CATEGORY	A	B	C	D
S-ILS 17		225-½	200 (200-½)	
S-LOC 17		340-½	315 (400-½)	
CIRCLING	500-1	475 (500-1)	500-1½ 475 (500-1½)	620-2 595 (600-2)

