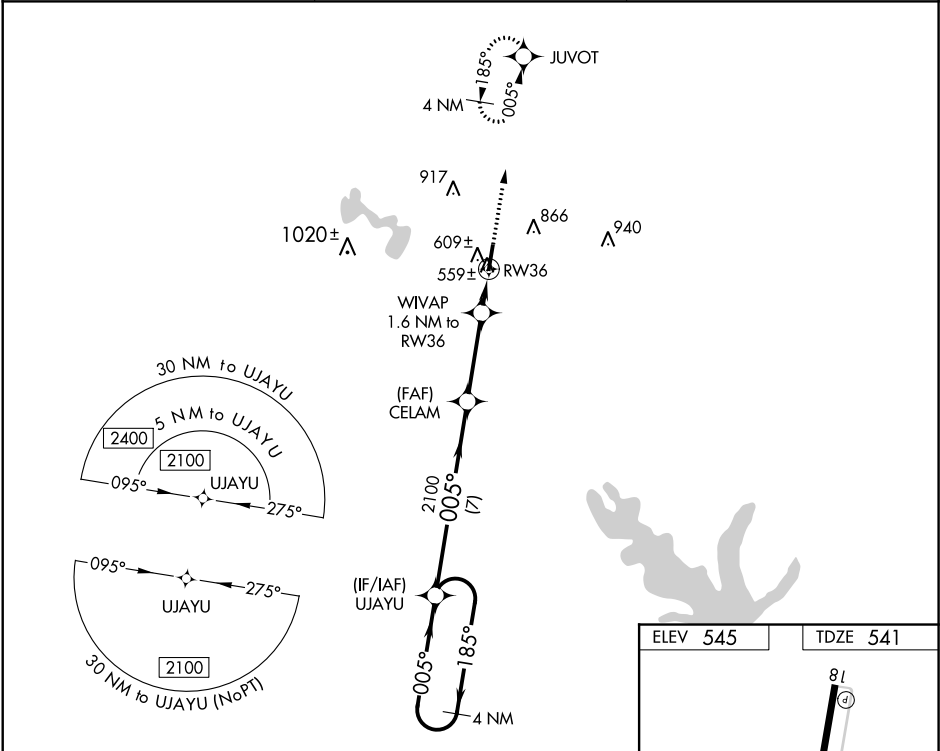


WAAS CH <b>69228</b> <b>W36A</b>	APP CRS <b>005°</b>	Rwy Idg TDZE Apt Elev	<b>5000</b> <b>541</b> <b>545</b>
--	------------------------	-----------------------------	---

**RNAV (GPS) RWY 36**  
MEXIA-LIMESTONE COUNTY (LXY)

 NA	DME/DME RNP-0.3 NA. Helicopter visibility reduction below ¾ SM NA. Obtain local altimeter setting on CTAF; when not received, use Waco Rgnl altimeter setting and increase all MDA 100 feet; increase LP Cat C visibility ½ mile and LNAV and circling Cat C visibility ¼ mile.	MISSED APPROACH: Climb to 2400 direct JUVOT and hold.
--------	---	--

AWOS-3 <b>127.275</b>	WACO APP CON <b>127.65 352.0</b>	UNICOM <b>122.8</b> (CTAF)
--------------------------	-------------------------------------	-------------------------------



4 NM Holding Pattern		VGSI and descent angles not coincident (VGSI Angle 3.00/TCH 24).		2400	JUVOT
UJAYU		CELAM		WIVAP	
2100 ← 185°		005° → 2100		1.6 NM to RW36	
005° →		3.00° TCH 40		RW36	
7 NM		3.2 NM		1.6 NM	
CATEGORY	A	B	C	D	
LP MDA	860-1	319 (400-1)		NA	
LNAV MDA	880-1	339 (400-1)		NA	
CIRCLING	960-1 415 (500-1)	1000-1 456 (500-1)	1180-1¾ 636 (700-1¾)	NA	

