

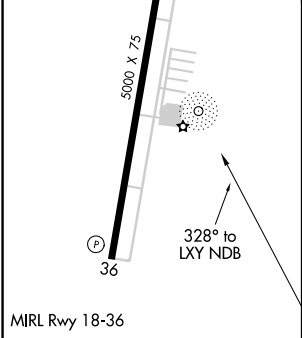
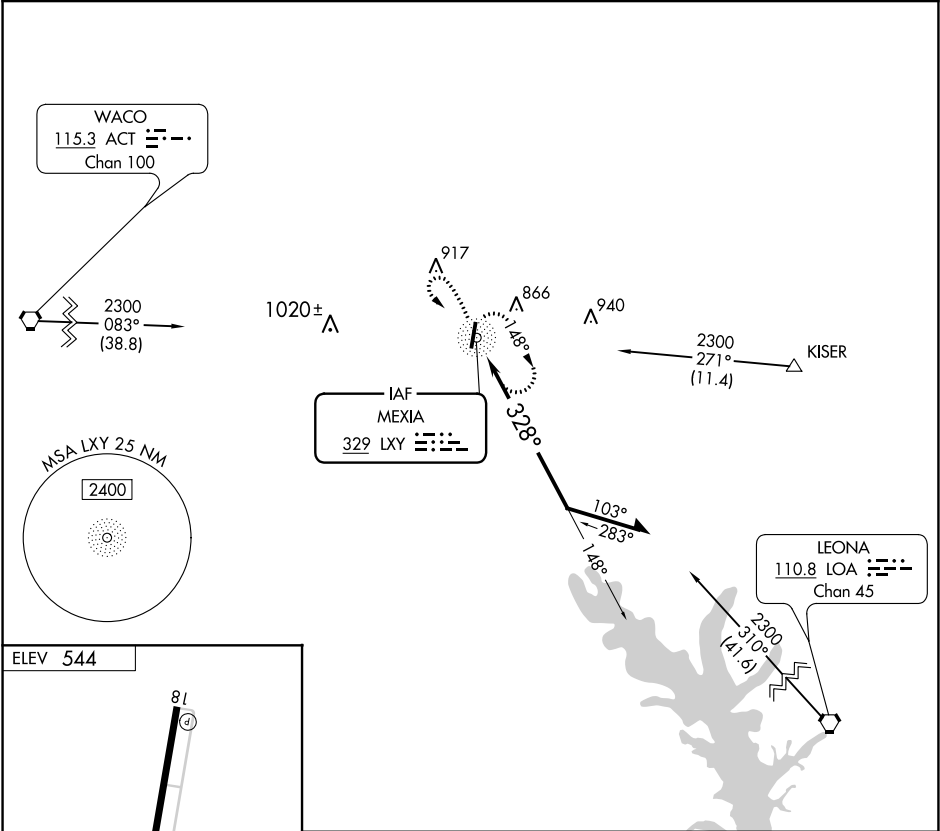
NDB LX ^Y 329	APP CRS 328°	Rwy Idg TDZE Apt Elev N/A N/A 544
-----------------------------------	------------------------	---

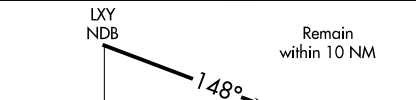
NDB-A

MEXIA-LIMESTONE COUNTY (LXY)

▼ ▲ NA	Obtain local altimeter setting on CTAF; when not received, use Waco Rgnl altimeter setting and increase all MDA 100 feet and Cat C visibility ¼ mile. Rwy 36 helicopter visibility reduction below ¾ SM NA.	MISSED APPROACH: Climb to 1600 then climbing left turn to 2300 direct LXY NDB and hold.
-----------	---	---

AWOS-3 127.275	WACO APP CON 127.65 352.0	UNICOM 122.8 (CTAF)
--------------------------	-------------------------------------	-------------------------------



1600	2300	LXY			
CATEGORY	A	B	C	D	
CIRCLING	1080-1	536 (600-1)	1180-1 ³ / ₄ 636 (700-1 ³ / ₄)	NA	