

VOR/DME BPT	APP CRS	Rwy Idg	5500
114.5	229°	TDZE	13
Chan 92		Apt Elev	13

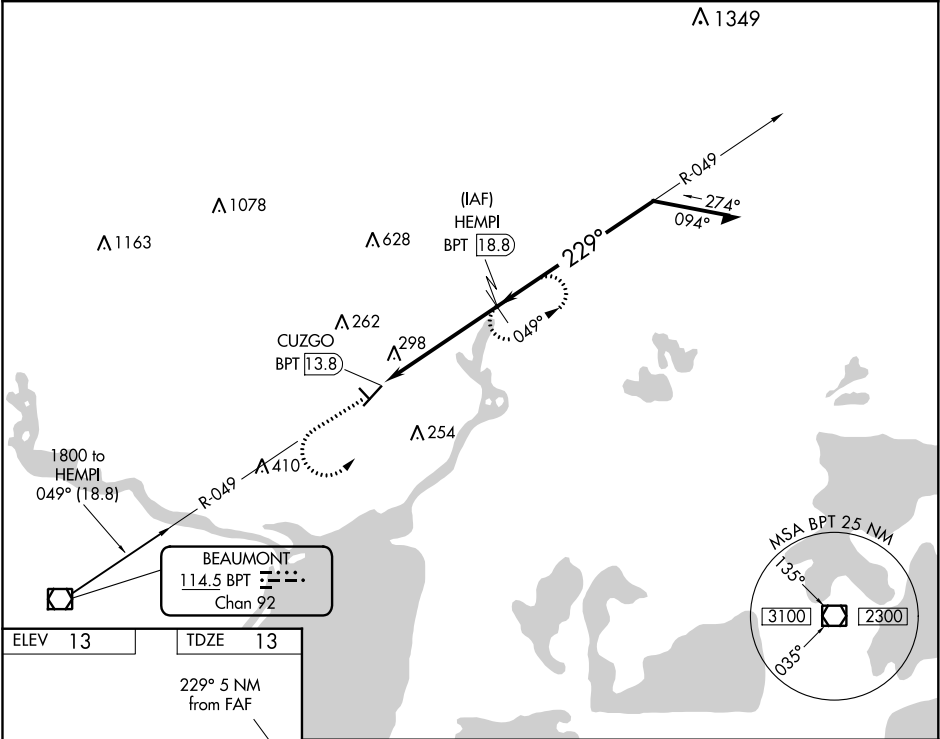
VOR/DME RWY 22
ORANGE COUNTY (OR.G)

⚠ Visibility reduction by helicopters NA. Circling NA to Rwy 13/31. VDP NA when using Jack Brooks Rgnl altimeter setting.

⚠ When local altimeter setting not received, use Jack Brooks Rgnl altimeter setting and increase all MDA 40 feet and increase S-22 and Circling Cat C visibility ¼ mile.

MISSED APPROACH: Climb to 1000 then climbing left turn to 2000 via BPT R-049 to HEMPI/18.8 DME and hold.

AWOS-3 118.975	HOUSTON APP CON 121.3 377.1	UNICOM 122.8 (CTAF) 0
-------------------	--------------------------------	---------------------------------



ELEV 13 TDZE 13

229° 5 NM from FAF

31 500 X 75 3000 X 50

1000	2000	HEMPI BPT 18.8	VGSi and descent angles not coincident (VGSi Angle 3.00/TCH 21).
BPT R-049	HEMPI BPT 18.8		
CUZGO BPT 13.8	BPT 15.6	HEMPI BPT 18.8	Remain within 10 NM
1.8 NM		3.3 NM	

CATEGORY	A	B	C	D
S-22	600-1 587 (600-1)		600-1½ 587 (600-1½)	NA
CIRCLING	660-1 647 (700-1)		660-1¾ 647 (700-1¾)	NA

MIRL Rwy 4-22 **0**
REIL Rwy 4 and 22 **0**