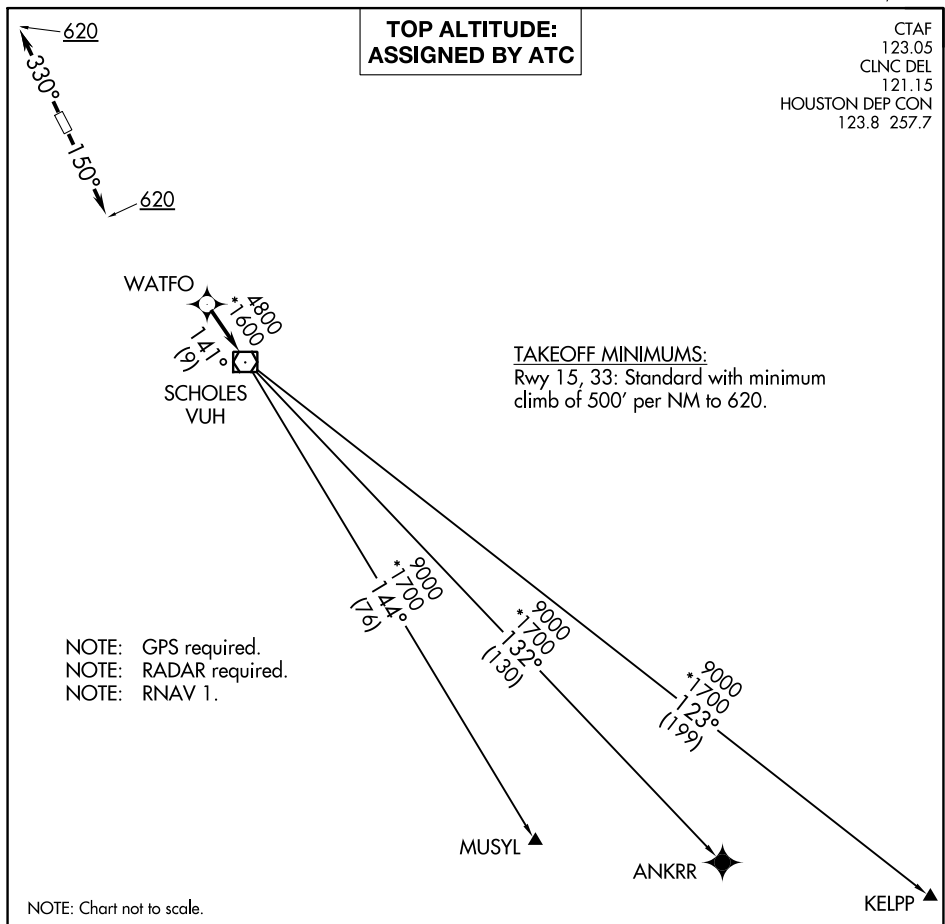


WEST HOUSTON (IWS)
HOUSTON, TEXAS

WATFO FIVE DEPARTURE (RNAV)



DEPARTURE ROUTE DESCRIPTION

TAKEOFF RWY 15: Climb on heading 150° to 620, for RADAR vectors to WATFO, thence . . .

TAKEOFF RWY 33: Climb on heading 330° to 620, for RADAR vectors to WATFO, thence. . . .

...on track 141° to VUH VOR/DME, then on (transition). Maintain ATC assigned altitude. Expect filed altitude 10 minutes after departure.

ANKRR TRANSITION (WATFO5.ANKRR)

KELPP TRANSITION (WATFO5.KELPP)

MUSYL TRANSITION (WATFO5.MUSYL)

WATFO FIVE DEPARTURE (RNAV)

(WATFO5.WATFO) 25APR19

HOUSTON, TEXAS
WEST HOUSTON (IWS)

SC-5, 03 DEC 2020 to 31 DEC 2020

SC-5, 03 DEC 2020 to 31 DEC 2020