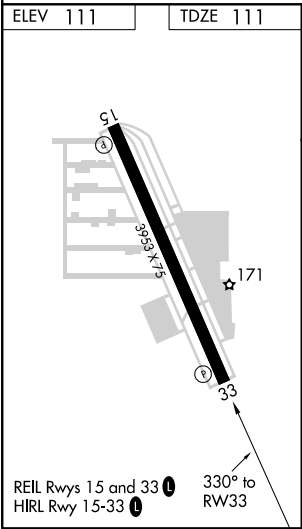
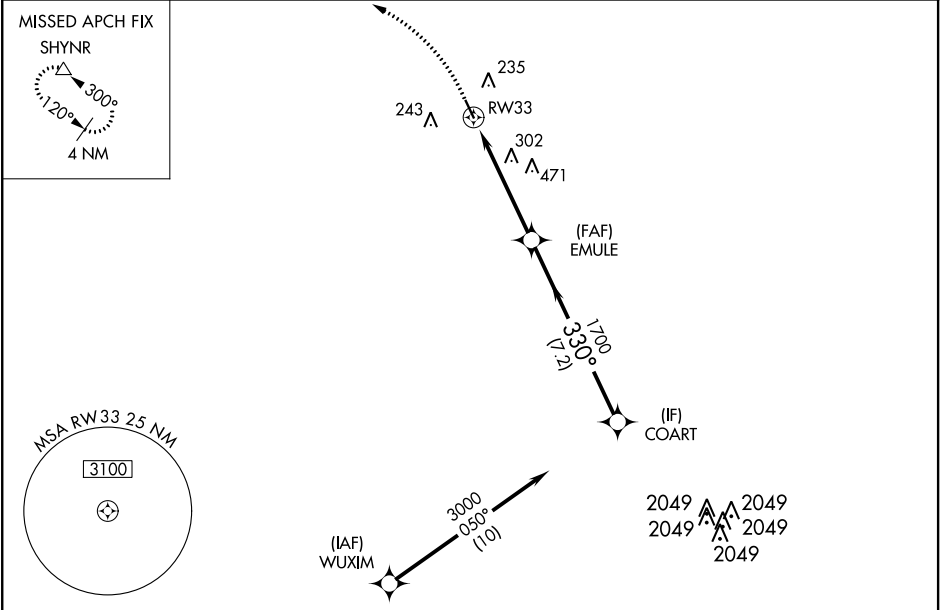




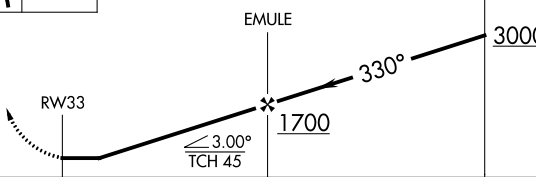
APP CRS	Rwy Idg	3953
330°	TDZE	111
	Apt Elev	111

RNAV (GPS) RWY 33
WEST HOUSTON (IWS)

RNP APCH.	MISSED APPROACH: Climbing left turn to 2000 direct SHYNR and hold.
▼ Rwy 33 helicopter visibility reduction below 1 SM NA. ▲NA Use George Bush Intercontinental/Houston altimeter setting. Circling Rwy 15 NA at night.	

HOUSTON APP CON 123.8 257.7	CLNC DEL 121.15	UNICOM 123.05 (CTAF) 0
--------------------------------	--------------------	---------------------------



2000	SHYNR	VGSI and descent angles not coincident [VGSI Angle 3.70/TCH 44].		
				
				
CATEGORY	A	B	C	D
LNAV MDA	600-1	489 (500-1)	600-1 $\frac{3}{8}$ 489 (500-1 $\frac{3}{8}$)	NA
CIRCLING	600-1	489 (500-1)	640-1 $\frac{1}{2}$ 529 (600-1 $\frac{1}{2}$)	NA