

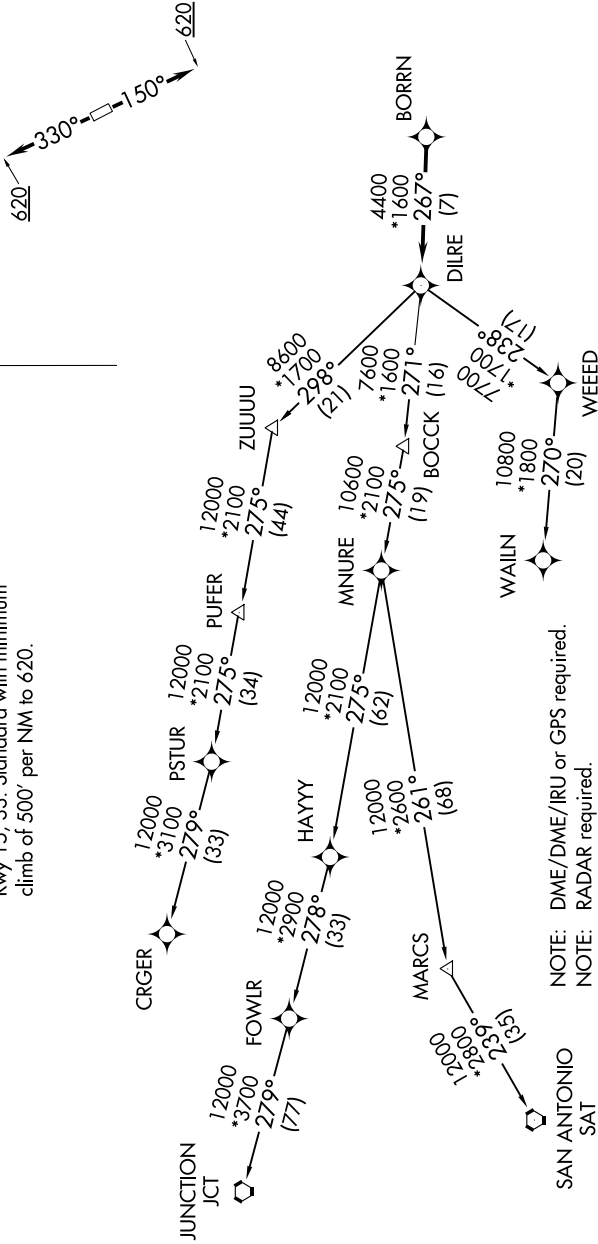
SC-5, 03 DEC 2020 to 31 DEC 2020

CTAF
123.05
CINC DEL
121.15
HOUSTON DEP CON
123.8 257.7

TAKEOFF MINIMUMS:
Rwy 15, 33: Standard with minimum
climb of 500' per NM to 620.

TOP ALTITUDE:
ASSIGNED BY ATC

N



NOTE: DME/DME/IRU or GPS required.
NOTE: RADAR required.
NOTE: RNAV 1.
NOTE: CRGR TRANSITION ATC assigned only
for aircraft departing 54T, AXH, EFD, GLS,
HPY, IWS, LBX, LVJ, SGR, TME, T00, T41.

(NARRATIVE ON FOLLOWING PAGE)

NOTE: Chart not to scale.

SC-5, 03 DEC 2020 to 31 DEC 2020