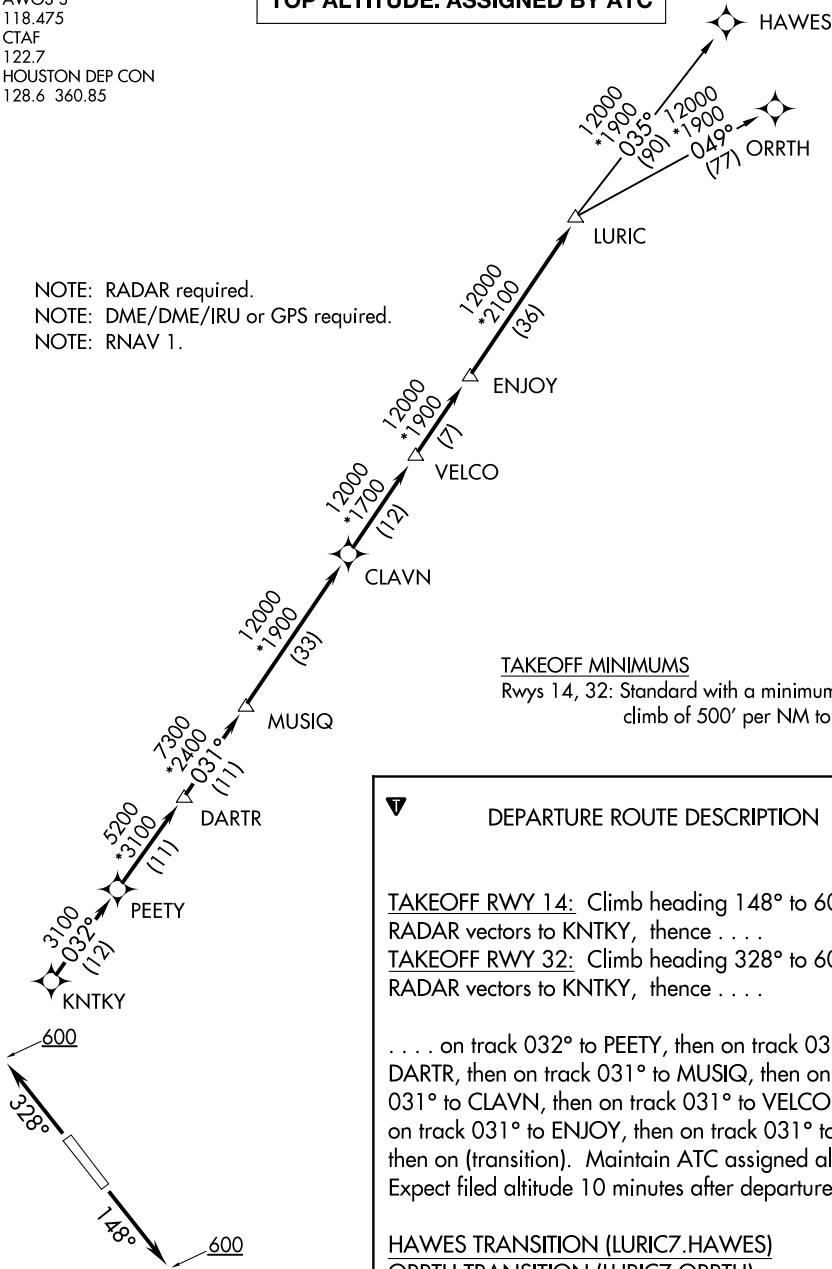


AWOS-3
118.475
CTAF
122.7
HOUSTON DEP CON
128.6 360.85

TOP ALTITUDE: ASSIGNED BY ATC

NOTE: RADAR required.
NOTE: DME/DME/IRU or GPS required.
NOTE: RNAV 1.



TAKEOFF MINIMUMS
Rwys 14, 32: Standard with a minimum
climb of 500' per NM to 600.

DEPARTURE ROUTE DESCRIPTION

TAKEOFF RWY 14: Climb heading 148° to 600 for
RADAR vectors to KNTKY, thence
TAKEOFF RWY 32: Climb heading 328° to 600 for
RADAR vectors to KNTKY, thence

. . . . on track 032° to PEETY, then on track 032° to
DARTR, then on track 031° to MUSIQ, then on track
031° to CLAVN, then on track 031° to VELCO, then
on track 031° to ENJOY, then on track 031° to LURIC,
then on (transition). Maintain ATC assigned altitude.
Expect filed altitude 10 minutes after departure.

HAWES TRANSITION (LURIC7.HAWES)
ORRTH TRANSITION (LURIC7.ORRTH)