

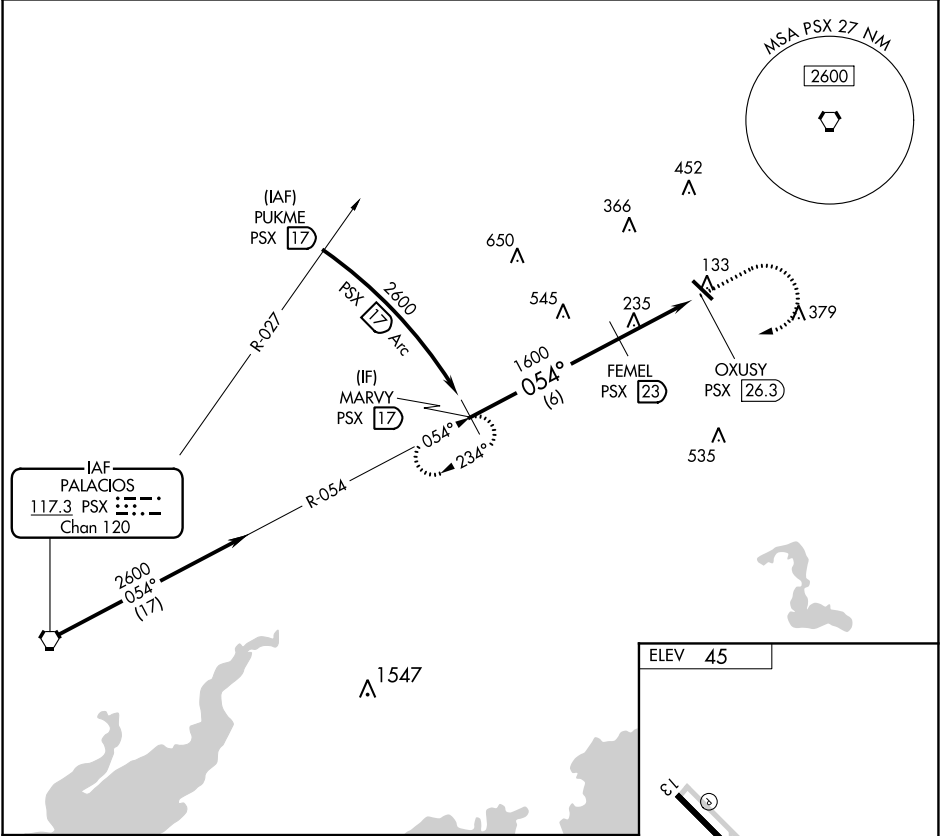
VORTAC PSX 117.3 Chan 120	APP CRS 054°	Rwy Idg TDZE Apt Elev N/A N/A 45
---	------------------------	--

VOR-A
BAY CITY RGNL (BYT)

- ▼ Rwy 13, 31 helicopter visibility reduction below 1 SM NA.
DME required. When local altimeter setting not received,
use Palacios altimeter setting and increase all MDA 80 feet.

▲ MISSED APPROACH: Climb to 1100 then climbing right turn
to 2600 on PSX VORTAC R-054 to MARVY/17 DME and hold.

AWOS-3 118.075	HOUSTON CENTER 128.6 360.8	UNICOM 122.8 (CTAF) 0
--------------------------	--------------------------------------	--



<div>MARVY PSX 17</div>		<div>FEMEL PSX 23</div>	<div>1100</div> <div>↑</div>	<div>2600</div> <div>↗</div> <div>PSX R-054</div>	<div>MARVY PSX 17</div>
<div>2600</div>		<div>054°</div>		<div>1600</div>	<div>OXUSY PSX 26.3</div>
<div>6 NM</div>		<div>3.3 NM</div>			
CATEGORY	A	B	C	D	
CIRCLING	1080-1¼ 1035 (1100-1¼)	1080-1½ 1035 (1100-1½)	1080-3 1035 (1100-3)	NA	

