

WAAS CH 82513 W17A	APP CRS 170°	Rwy Idg TDZE Apt Elev	7620 82 82
--	------------------------	-----------------------------	---------------------------------------

RNAV (GPS) RWY 17

SUGAR LAND RGNL (SGR)

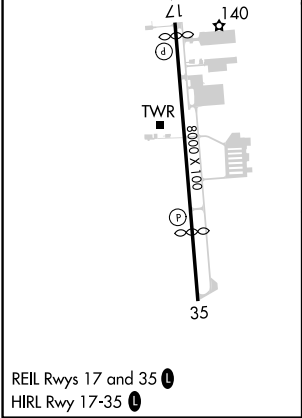
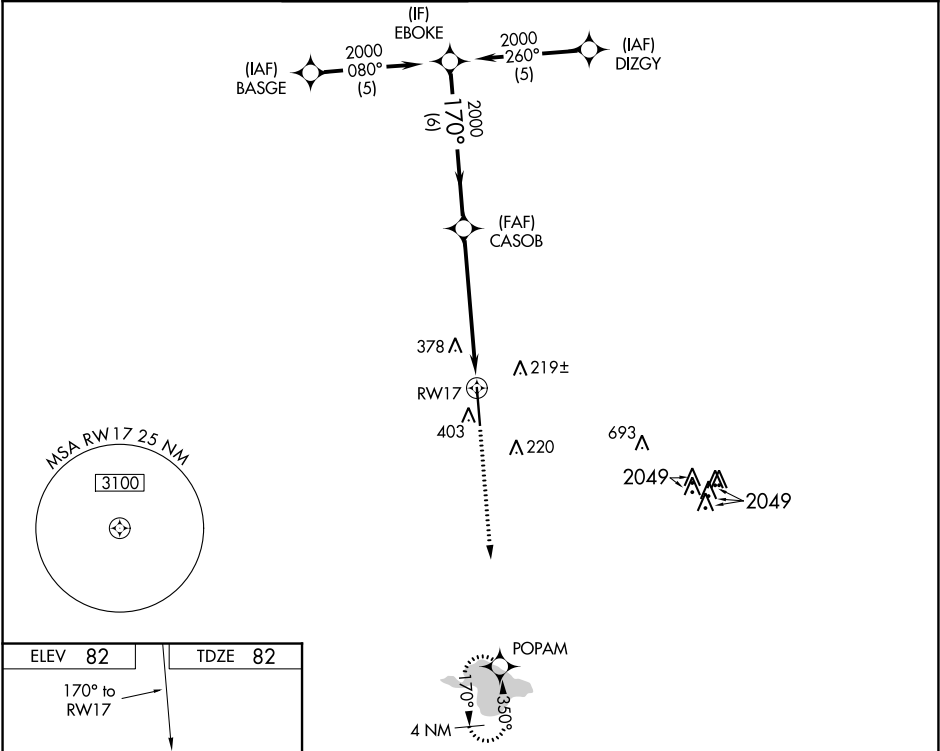
RNP APCH.

▼

Rwy 17 helicopter visibility reduction below ¾ SM NA. For uncompensated Baro-VNAV systems, LNAV/VNAV NA below -1.5°C or above 54°C.

MISSED APPROACH: Climb to 2000 direct POPAM and hold.

ATIS★ 118.125	HOUSTON APP CON 123.8 257.7	SUGAR LAND TOWER★ 118.65 (CTAF) 0	GND CON 121.4	CLNC DEL 121.4	CLNC DEL 119.25 (when twr closed)	UNICOM 122.95
-------------------------	---------------------------------------	--	-------------------------	--------------------------	--	-------------------------



VGSi and RNAV glidepath not coincident (VGSi Angle 3.5/TCH 52).				2000	POPAM
EBOKE				2000	POPAM
CASOB				2000	POPAM
2000				2000	POPAM
GP 3.00° TCH 52				2000	POPAM
6 NM				2000	POPAM
4.4 NM				2000	POPAM
1.4 NM				2000	POPAM
RWY 17				2000	POPAM
CATEGORY				2000	POPAM
A				2000	POPAM
B				2000	POPAM
C				2000	POPAM
D				2000	POPAM
LPV DA				2000	POPAM
398-1				2000	POPAM
316 (400-1)				2000	POPAM
LNAV/VNAV DA				2000	POPAM
704-2				2000	POPAM
622 (700-2)				2000	POPAM
LNAV MDA				2000	POPAM
640-1				2000	POPAM
558 (600-1)				2000	POPAM
640-1½				2000	POPAM
558 (600-1½)				2000	POPAM
CIRCLING				2000	POPAM
720-1				2000	POPAM
638 (700-1)				2000	POPAM
720-1¾				2000	POPAM
638 (700-1¾)				2000	POPAM
720-2				2000	POPAM
638 (700-2)				2000	POPAM

SC-5, 03 DEC 2020 to 31 DEC 2020

SC-5, 03 DEC 2020 to 31 DEC 2020