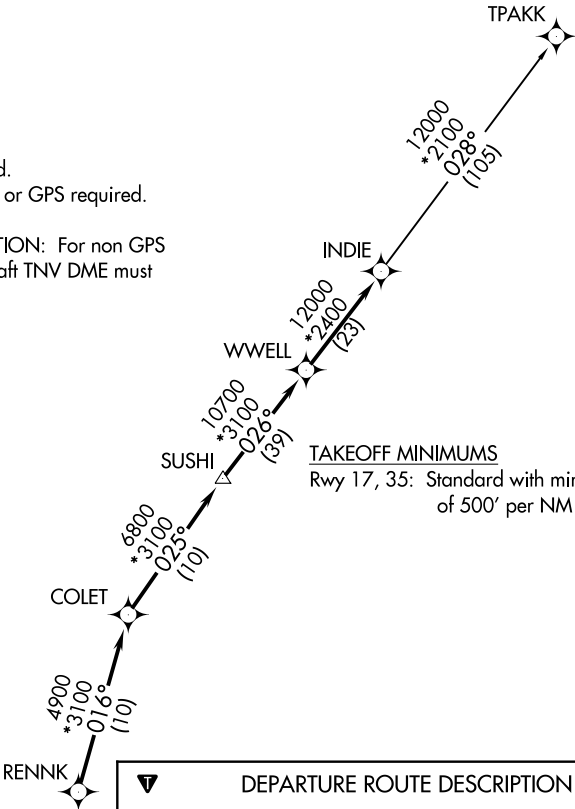


INDIE SEVEN DEPARTURE(RNAV)

ATIS ★
118.125
CLNC DEL
121.4
CLNC DEL (when twr closed)
119.25
GND CON
121.4
SUGARLAND TOWER ★
118.65 (CTAF)
HOUSTON DEP CON
123.8 257.7

TOP ALTITUDE:
ASSIGNED BY ATC

- NOTE: RADAR required.
NOTE: DME/DME/IRU or GPS required.
NOTE: RNAV 1.
NOTE: TPAKK TRANSITION: For non GPS
equipped aircraft TNV DME must
be operational.



TAKEOFF MINIMUMS
Rwy 17, 35: Standard with minimum climb
of 500' per NM to 600.

DEPARTURE ROUTE DESCRIPTION

TAKEOFF RWY 17: Climb heading 170° to 1500 for
RADAR vectors to RENNK, then
TAKEOFF RWY 35: Climb heading 350° to 1100 for
RADAR vectors to RENNK, then
. . . . on track 016° to COLET, then on track 025° to
SUSHI, then on track 026° to WWELL, then on track
026° to INDIE, then on (transition). Maintain ATC
assigned altitude. Expect filed altitude 10 minutes after
departure.

TPAKK TRANSITION (INDIE7.TPAKK)

NOTE: Chart not to scale.