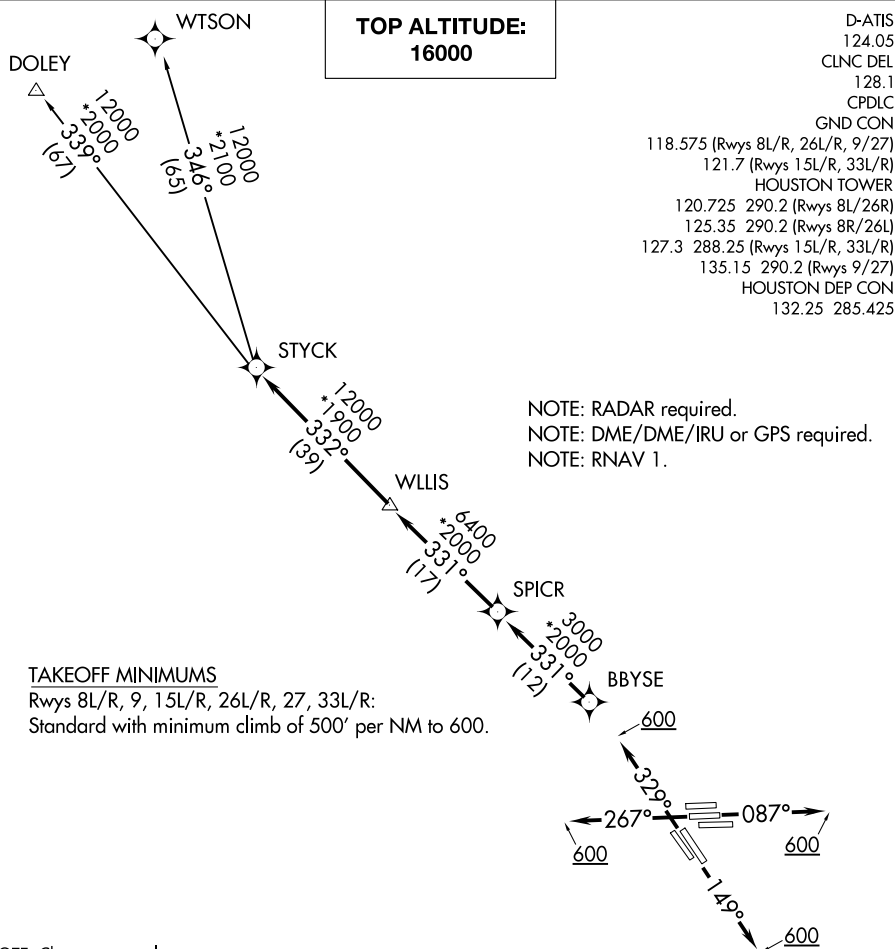


STYCK SEVEN DEPARTURE (RNAV)

GEORGE BUSH INTERCONTINENTAL/HOUSTON (IAH)

AL-5461 (FAA)

HOUSTON, TEXAS



NOTE: Chart not to scale.

DEPARTURE ROUTE DESCRIPTION

TAKEOFF RWYS 8L/R, 9: Climb heading 087° to 600 for RADAR vectors to BBYSE, thence. . .

TAKEOFF RWYS 15L/R: Climb heading 149° to 600 for RADAR vectors to BBYSE, thence. . .

TAKEOFF RWYS 26L/R, 27: Climb heading 267° to 600 for RADAR vectors to BBYSE, thence. . .

TAKEOFF RWYS 33L/R: Climb heading 329° to 600 for RADAR vectors to BBYSE, thence. . .

...on track 331° to SPICR, then on track 331° to WLLIS, then on track 332° to STYCK, then on (transition). Maintain 16000 or as assigned by ATC. Expect filed altitude 10 minutes after departure.

DOLEY TRANSITION (STYCK7.DOLEY)

WTSON TRANSITION (STYCK7.WTSON)

STYCK SEVEN DEPARTURE (RNAV)

(STYCK7.STYCK) 25APR19

HOUSTON, TEXAS

GEORGE BUSH INTERCONTINENTAL/HOUSTON (IAH)

SC-5, 03 DEC 2020 to 31 DEC 2020