

| | | | |
|--|------------------------|-----------------------------|---------------------------------------|
| WAAS CH 77826 W08A | APP CRS 087° | Rwy Idg TDZE Apt Elev | 9000 95 96 |
|--|------------------------|-----------------------------|---------------------------------------|

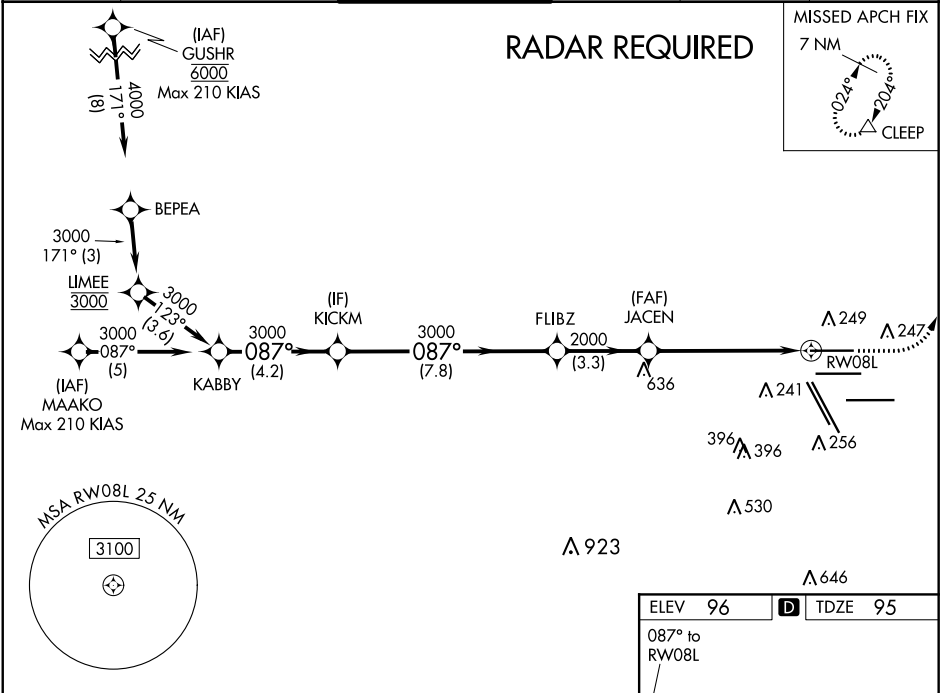
RNAV (GPS) Z RWY 8L
GEORGE BUSH INTERCONTINENTAL/HOUSTON (IAH)

▼ For uncompensated Baro-VNAV systems, LNAV/VNAV NA below -3°C (27°F) or above 54°C (130°F). For inop ALSF, increase LPV Cat E visibility to RVR 4000, LNAV/VNAV Cat E visibility to 1¼, and LNAV Cat C/D/E visibility to 1¾. Simultaneous approach authorized with Rwy 8R and Rwy 9. DME/DME RNP-0.3 NA. Use of FD or AP providing RNAV track guidance required during simultaneous operations. LNAV procedure NA during simultaneous operations.

ALSF-2

MISSED APPROACH: Climb to 580 then climbing left turn to 4000 direct CLEEP and hold.

| | | | | | |
|-------------------------|--|--------------------------------------|-------------------------|--------------------------|-------|
| D-ATIS 124.05 | HOUSTON APP CON 120.05 379.1 EAST 124.35 316.15 WEST | HOUSTON TOWER 120.72 290.2 | GND CON 121.7 | CLNC DEL 128.1 | CPDLC |
|-------------------------|--|--------------------------------------|-------------------------|--------------------------|-------|



GP 3.00° TCH 59

KABBY KICKM FLIBZ JACEN RW08L

3000-087° 3000 3000 2000 2000

4.2 NM 7.8 NM 3.3 NM 4.5 NM 1.3 NM

580 4000 CLEEP

*LNAV only.

*1.3 NM to RW08L

| CATEGORY | A | B | C | D | E |
|--------------|--------|-------------|-------------|-------------|---|
| LPV DA | 295/18 | | 200 (200-½) | | |
| LNAV/VNAV DA | 486/40 | | 391 (400-¾) | | |
| LNAV MDA | 580/24 | 485 (500-½) | 580/50 | 485 (500-1) | |

ELEV 96 TDZE 95

087° to RW08L

9000 X 150 26R

402 X 150 26L

1000 X 150 33R

200 X 150 33L

TWR 422

10000 X 150 27

TDZ/CL Rwy 8R, 8L, 15R, 26R, 26L, 27 and 33L

HIRL all Rwy

SC-5, 03 DEC 2020 to 31 DEC 2020

SC-5, 03 DEC 2020 to 31 DEC 2020