

| | | |
|--|------------------------|--|
| WAAS CH 69626 W27A | APP CRS 267° | Rwy Idg 10000 TDZE 87 Apt Elev 96 |
|--|------------------------|--|

RNAV (GPS) Z RWY 27

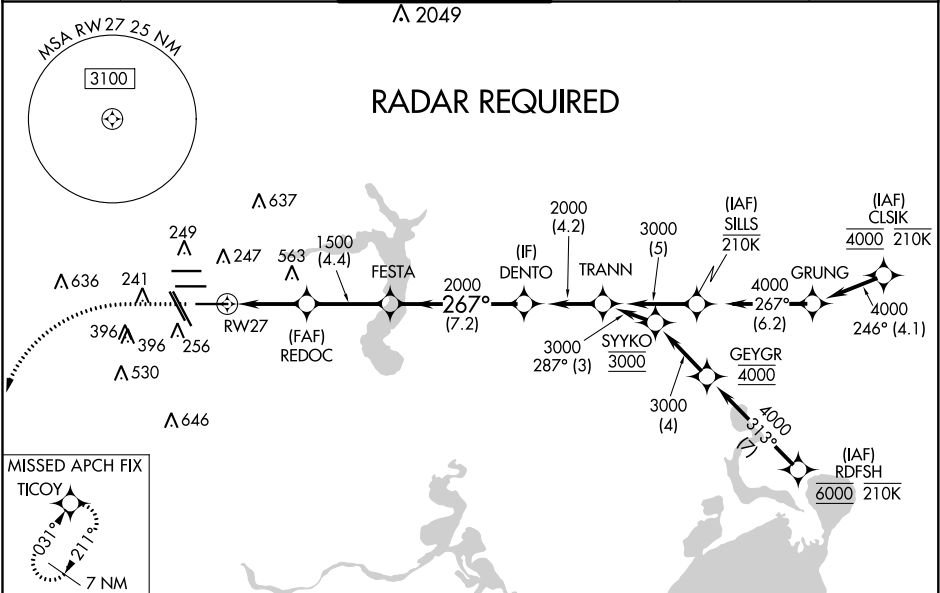
GEORGE BUSH INTERCONTINENTAL/HOUSTON (IAH)

▼ For uncompensated Baro-VNAV systems, LNAV/VNAV NA below -2°C (29°F) or above 54°C (130°F). Simultaneous approach authorized with Rwy 26L and Rwy 26R. DME/DME RNP-0.3 NA. For inop ALSF, increase LPV Cat E visibility to RVR 4000, LNAV/VNAV all Cats visibility to 1¼, and LNAV Cat C/D/E visibility to 1¾. LNAV procedure NA during simultaneous operations. Use of FD or AP providing RNAV track guidance required during simultaneous operations.

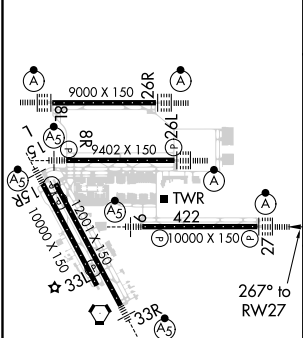
ALSF-2

MISSED APPROACH: Climb to 560 then climbing left turn to 3100 direct TICOY and hold.

| | | | | | |
|-------------------------|--|--------------------------------------|---------------------------|--------------------------|-------|
| D-ATIS 124.05 | HOUSTON APP CON 120.05 379.1 EAST 124.35 316.15 WEST | HOUSTON TOWER 135.15 290.2 | GND CON 118.575 | CLNC DEL 128.1 | CPDLC |
|-------------------------|--|--------------------------------------|---------------------------|--------------------------|-------|




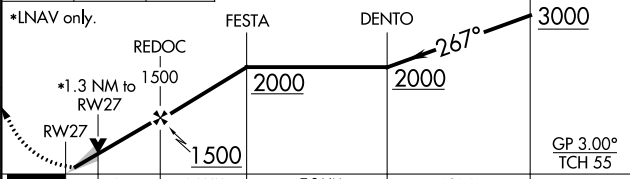


| | | |
|----------------|----------|----------------|
| ELEV 96 | D | TDZE 87 |
|----------------|----------|----------------|



TDZ/CL Rwy 8R, 8L, 15R, 26R, 26L, 27 and 33L

HIRL all Rwy

| | | | | | |
|---|---|---|---|-------|-------------|
| 560 | 3100 | TICOY | VGSI and RNAV glidepath not coincident (VGSI Angle 3.00/TCH 70). | | |
|  |  |  | | | |
| *LNAV only. | | | FESTA | DENTO | TRANN |
|  | | | | | |
| | | | 2000 | 2000 | 3000 |
| | | | GP 3.00° TCH 55 | | |
| CATEGORY | A | B | C | D | E |
| LPV DA | 287/18 200 (200-½) | | | | |
| LNAV/ VNAV DA | 477/45 390 (400-¾) | | | | |
| LNAV MDA | 560/24 | 473 (500-½) | 560/50 | | 473 (500-1) |