

WAAS CH <b>97726</b> <b>W26A</b>	APP CRS <b>267°</b>	Rwy Idg <b>9000</b> TDZE <b>96</b> Apt Elev <b>96</b>
--	------------------------	---

## RNAV (GPS) Z RWY 26R

GEORGE BUSH INTERCONTINENTAL/HOUSTON (T A H)

▼ For uncompensated Baro-VNAV systems, LNAV/VNAV NA below -3°C (27°F) or above 54°C (130°F). For inop ALSF, increase LPV Cat E visibility to RVR 4000, LNAV/VNAV All Cts visibility to 1/4, and LNAV Cat C/D/E visibility to 1/3. DME/DME RNP-0.3 NA. Simultaneous approach authorized with Rwy 26L and Rwy 27. LNAV procedure NA during simultaneous operations. Use of FD or AP precludes RNAV track guidance required during simultaneous operations.

ALSF-2



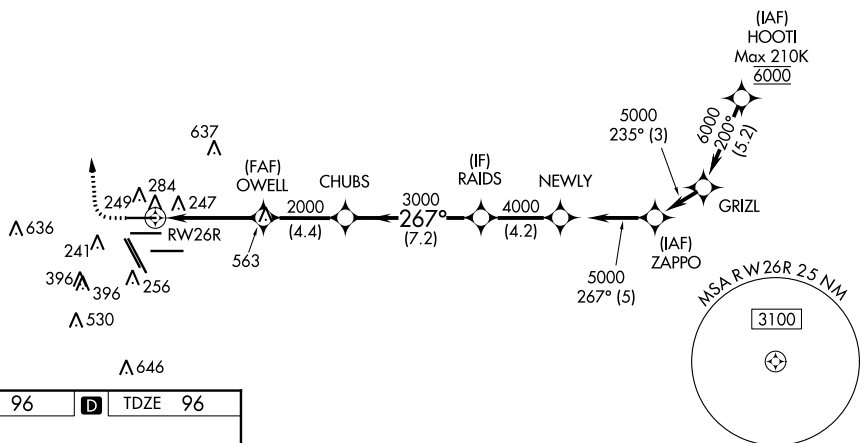
**MISSED APPROACH:** Climb to 600 then climbing right turn to 3000 direct PEPBI and hold.

D-ATIS <b>124.05</b>	HOUSTON APP CON <b>120.05 379.1</b> EAST <b>124.35 316.15</b> WEST	HOUSTON TOWER <b>120.72 290.2</b>	GND CON <b>121.7</b>	CLNC DEL <b>128.1</b>	CPDLC
-------------------------	--	--------------------------------------	-------------------------	--------------------------	-------

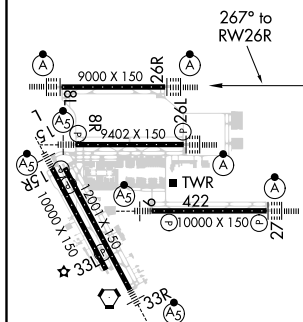


## RADAR REQUIRED

Δ<sup>2049</sup>



ELEV 96	<b>D</b>	TDZE 96
---------	----------	---------



TDZ/CL Rwy's 8R, 8L, 15R, 26R, 26L,  
27 and 33L  
HRL qll Rwy's

