

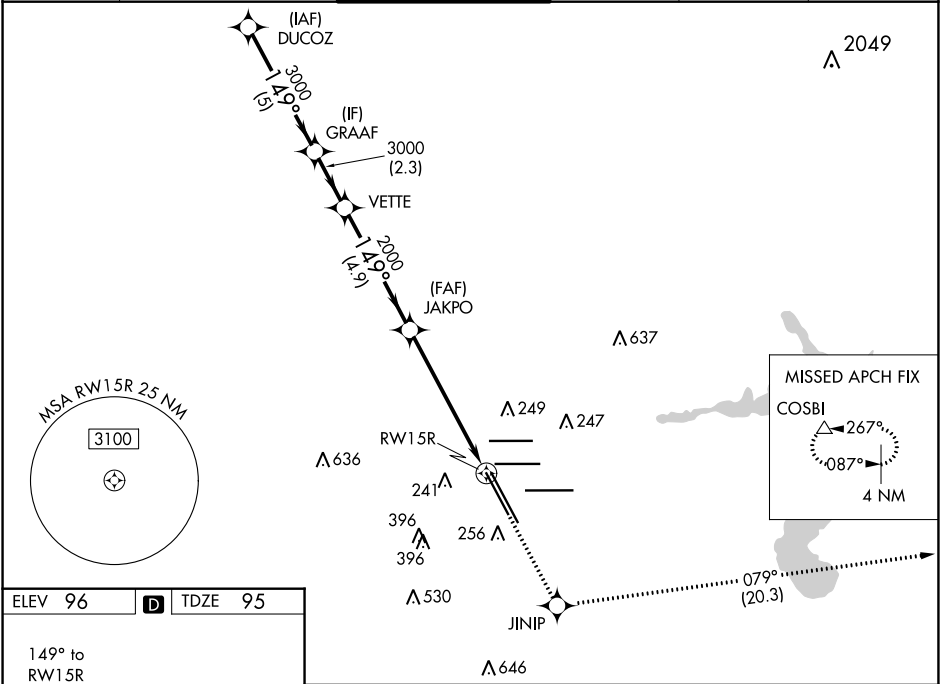
WAAS CH <b>97599</b> <b>W15A</b>	APP CRS <b>149°</b>	Rwy Idg TDZE Apt Elev	<b>9999</b> <b>95</b> <b>96</b>
--	------------------------	-----------------------------	---------------------------------------

RNAV (GPS) RWY 15R

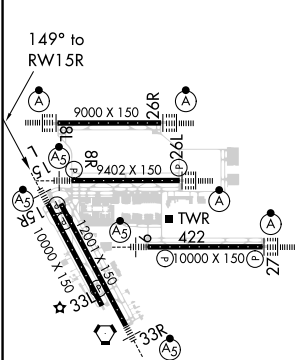
GEORGE BUSH INTERCONTINENTAL/HOUSTON (IAH)

RADAR required for procedure entry. RNP APCH.		MALSR 	MISSED APPROACH: Climb to 2000 direct JINIP and left turn on track 079° to COSBI and hold.
For uncompensated Baro-VNAV systems, LNAV/VNAV NA below -3°C or above 54°C. For inop ALS, increase LPV Cat E visibility to RVR 4000, LNAV/VNAV all Cats visibility to RVR 5500, and LNAV Cat C/D/E visibility to 1 3/8 SM.			

D-ATIS <b>124.05</b>	HOUSTON APP CON <b>120.05 379.1 EAST</b> <b>124.35 316.15 WEST</b>	HOUSTON TOWER <b>127.3 288.25</b>	GND CON <b>121.7</b>	CLNC DEL <b>128.1</b>	CPDLC
-------------------------	--	--------------------------------------	-------------------------	--------------------------	-------



ELEV 96	<b>D</b>	TDZE 95
---------	----------	---------



TDZ/CL Rwy 8R, 8L, 15R, 26R, 26L,  
27 and 33L  
HIRL all Rwy

VGSI and RNAV glidepath not coincident (VGSI Angle 3.00/TCH 71).					
DUCOZ GRAAF VETTE JAKPO JINIP COSBI					
3000 3000 3000 2000 2000 2000					
GP 3.00° TCH 54					
5 NM 2.3 NM 4.9 NM 4.5 NM 1.3 NM					
CATEGORY	A	B	C	D	E
LPV DA	295/18		200 (200-1/2)		
LNAV/VNAV DA	460/35		365 (400-3/4)		
LNAV MDA	580/24 485 (500-1/2)		580/50 485 (500-1)		