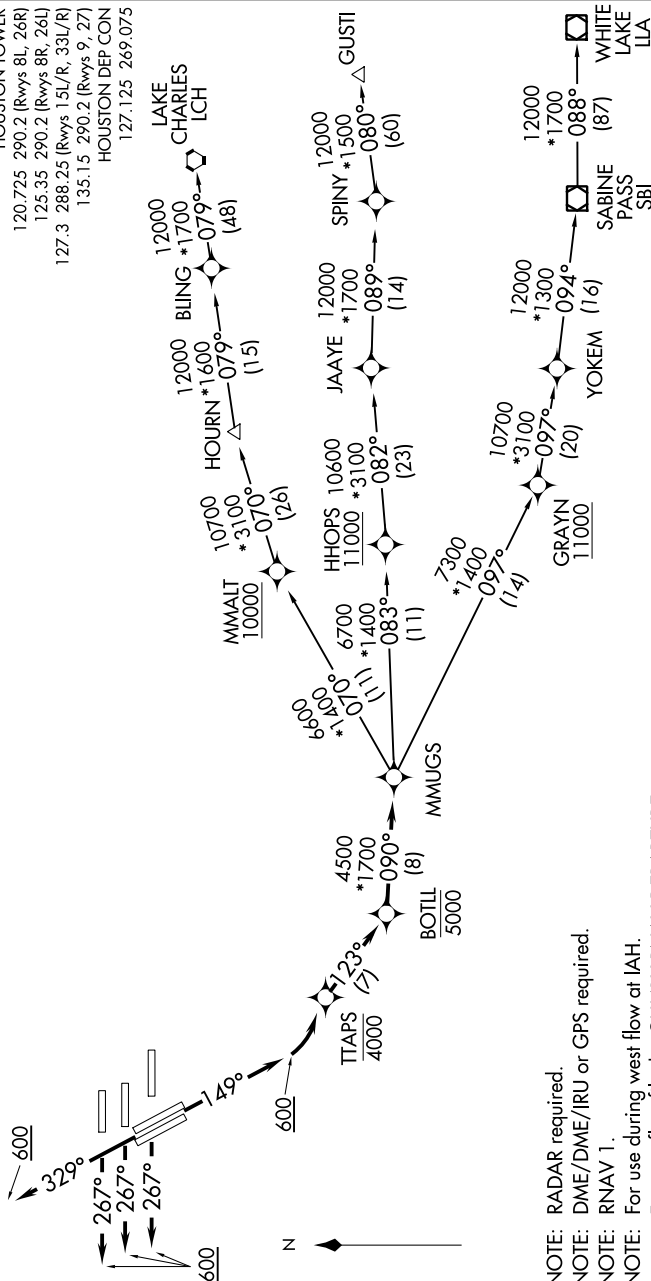


TOP ALTITUDE:
16000

TAKEOFF MINIMUMS

Rwys 15L/R, 26L/R, 27, 33L/R: Standard with minimum climb of 500' per NM to 800.

D-ATIS	124.05	CUNIC DEL	128.1	CPDLC	GND CON	127.125	269.075
					118.575 [Rwys 8L/R, 9, 27]		
					121.7 [Rwys 15L/R, 33L/R]		
					HOUSTON TOWER		
					120.725 290.2 [Rwys 8L, 26R]		
					125.35 290.2 [Rwys 8R, 26L]		
					27.3 288.25 [Rwys 15L/R, 33L/R]		
					135.15 290.2 [Rwys 9, 27]		
					HOUSTON DEP CON		



NOTE: RADAR required.
NOTE: DME/DME/IRU or GPS required.
NOTE: RNAV 1.
NOTE: For use during west flow at IAH.
For east flow file the GUMBY RNAV

NOTE: Chart not to scale.

(NARRATIVE ON FOLLOWING PAGE)

SC-5, 03 DEC 2020 to 31 DEC 2020

MMUGS FOUR DEPARTURE (RNAV)

(MMUGS4.MMUGS) 10DEC15

GEORGE BUSH INTERCONTINENTAL/HOUSTON (IAH)

HOUSTON, TEXAS