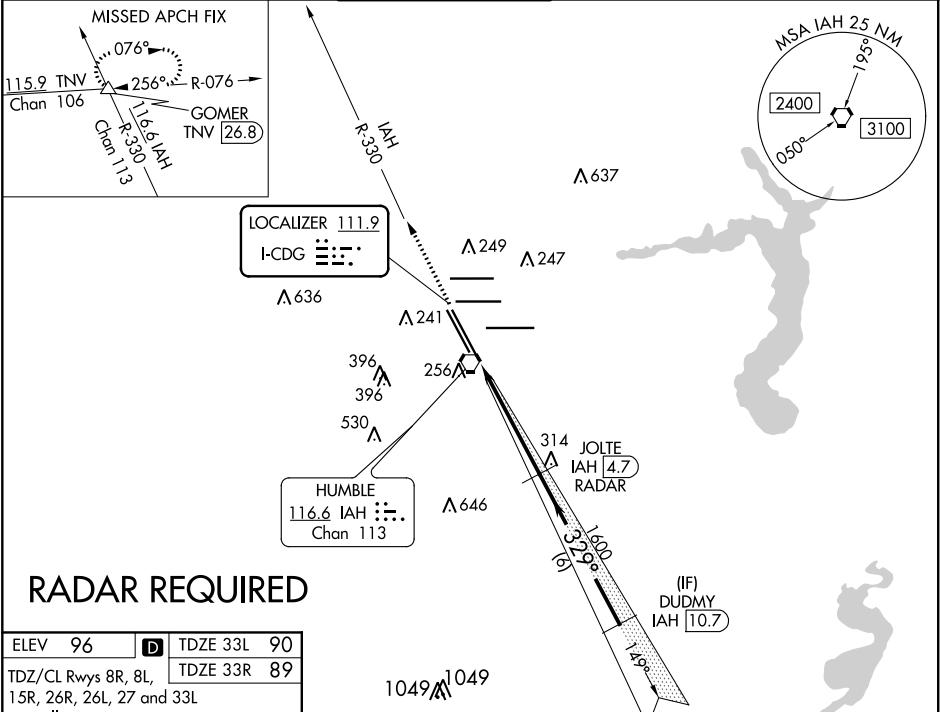


LOC I-CDG <b>111.9</b>	APP CRS <b>329°</b>	Rwy 33R Idg <b>12001</b>	Rwy 33L Idg <b>10000</b>
		TDZE <b>89</b>	TDZE <b>90</b>
		Apt Elev <b>96</b>	Apt Elev <b>96</b>

ILS or LOC RWY 33R  
GEORGE BUSH  
INTERCONTINENTAL/HOUSTON (IAH)

<p>▼ DME from IAH VORTAC. Simultaneous reception of I-CDG and IAH DME Required. For inop MALSR, increase S-ILS 33R Cat E visibility to RVR 4000 and S-LOC 33R Cat E visibility to 1/2. DME or RADAR Required. #RVR 1800 authorized with the use of FD or AP or HUD to DA.</p>	<p>MALSR </p>	<p>MISSED APPROACH: Climb to 2000 on IAH VORTAC R-330 to GOMER INT/TNV 26.8 DME and hold.</p>
---	-------------------	---

D-ATIS <b>124.05</b>	HOUSTON APP CON <b>120.05 379.1</b> EAST <b>124.35 316.15</b> WEST	HOUSTON TOWER <b>127.3 288.25</b>	GND CON <b>121.7</b>	CLNC DEL <b>128.1</b>	CPDLC
-------------------------	--	--------------------------------------	-------------------------	--------------------------	-------



RADAR REQUIRED

