

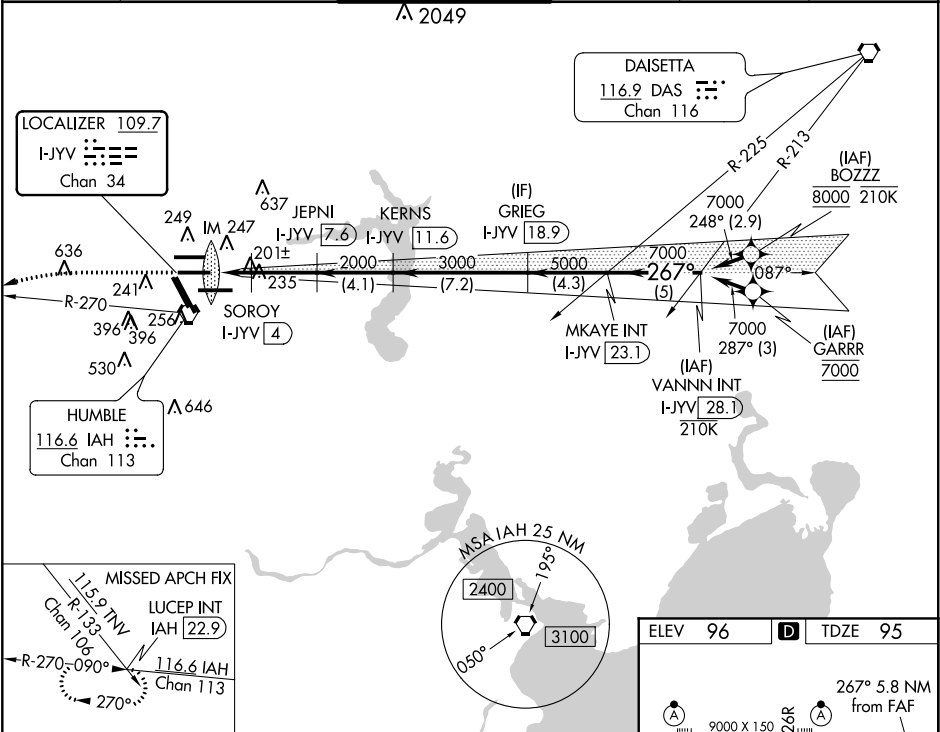
LOC/DME I-JYV	APP CRS	Rwy Idg	9402
109.7	267°	TDZE	95
Chan 34		Apt Elev	96

ILS or LOC RWY 26L

GEORGE BUSH INTERCONTINENTAL/HOUSTON (IAH)

DME required. From BOZZZ, GARRR: RNAV 1-GPS required.	ALSIF-2	MISSED APPROACH: Climb to 3000 then left turn heading 240° and IAH VORTAC R-270 to LUCEP INT/IAH 22.9 DME and hold.
Simultaneous approach authorized with Rwy 26R and Rwy 27. For inop ALS, increase S-ILS 26L Cat E visibility to RVR 4000, S-LOC 26L Cat C/D/E visibility to RVR 5000.		

D-ATIS	HOUSTON APP CON	HOUSTON TOWER	GND CON	CLNC DEL	CPDLC
124.05	120.05 379.1 EAST 124.35 316.15 WEST	125.35 290.2	118.575	128.1	



3000 ↑	hdg 240°	IAH R-270	LUCEP INT	VGSI and ILS glidepath not coincident (VGSI Angle 3.00/TCH 71).				
*LOC only								
				JEPNI I-JYV 7.6	KERNS I-JYV 11.6	GRIEG I-JYV 18.9	MKAYE INT I-JYV 23.1	VANNN INT I-JYV 28.1
				267°				
				7000				
				GS 3.00 TCH 56				
				2000				
				3000				
				5000				
				7000				
				880				
				2000				
				2000				
				2000				
				2000				
				2000				
				2000				
				2000				
				2000				
				2000				
				2000				
				2000				
				2000				
				2000				
				2000				
				2000				
				2000				
				2000				
				2000				
				2000				
				2000				
				2000				
				2000				
				2000				
				2000				
				2000				
				2000				
				2000				
				2000				
				2000				
				2000				
				2000				
				2000				
				2000				
				2000				
				2000				
				2000				
				2000				
				2000				
				2000				
				2000				
				2000				
				2000				
				2000				
				2000				
				2000				
				2000				
				2000				
				2000				
				2000				
				2000				
				2000				
				2000				
				2000				
				2000				
				2000				
				2000				
				2000				
				2000				
				2000				
				2000				
				2000				
				2000				
				2000				
				2000				
				2000				
				2000				
				2000				
				2000				
				2000				
				2000				
				2000				
				2000				
				2000				
				2000				
				2000				
				2000				
				2000				
				2000				
				2000				
				2000				
				2000				
				2000				
				2000				
				2000				
				2000				
				2000				
				2000				
				2000				
				2000				
				2000				
				2000				
				2000				
				2000				
				2000				
				2000				
				2000				
				2000				
				2000				
				2000				
				2000				
				2000				
				2000				
				2000				
				2000				
				2000				
				2000				
				2000				
				2000				
				2000				
				2000				
				2000				
				2000				
				2000				
				2000				
				2000				
				2000				
				2000				
				2000				
				2000				
				2000				
				2000				
				2000				
				2000				
				2000				
				2000				
				2000				
				2000				
				2000				
				2000				
				2000				
				2000				
				2000				
				2000				
				2000				
				2000				
				2000				
				2000				
				2000				
				2000				
				2000				
				2000				
				2000				
				2000				
				2000				
				2000				
				2000				
				2000				
				2000				
				2000				
				2000				
				2000				
				2000				
				2000				
				2000				
				2000				
				2000				
				2000				
				2000				
				2000				
				2000				
				2000				
				2000				
				2000				
				2000				
				2000				
				2000				
				2000				
				2000				
				2000				
				2000				
				2000				
				2000				
				2000				
				2000				
				2000				
				2000				
				2000				
				2000				
				2000				
				2000				
				2000				
				2000				
				2000				
				2000				
				2000				
				2000				
				2000				
				2000				
				2000				
				2000				
				2000				
				2000				
				2000				
				2000				
				2000				
				2000				
				2000				
				2000				
				2000				
				2000				
				2000				
				2000				
				2000				
				2000				
				2000				
				2000				
				2000				
				2000				
				2000				
				2000				
				2000				
				2000				
				2000				
				2000				

ELEV 96	TDZE 95
TDZ/CL Rwys 8R, 8L, 15R, 26R, 26L, 27 and 33L HIRL all Rwys	
FAF to MAP 5.8 NM	
Knots	60 90 120 150 180
Min:Sec	5:48 3:52 2:54 2:19 1:56