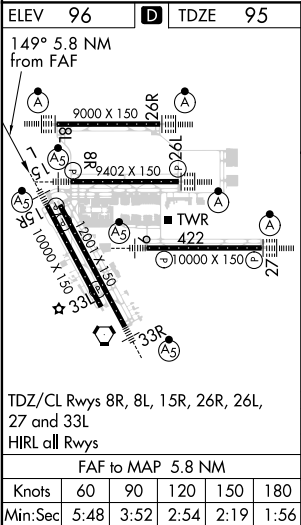
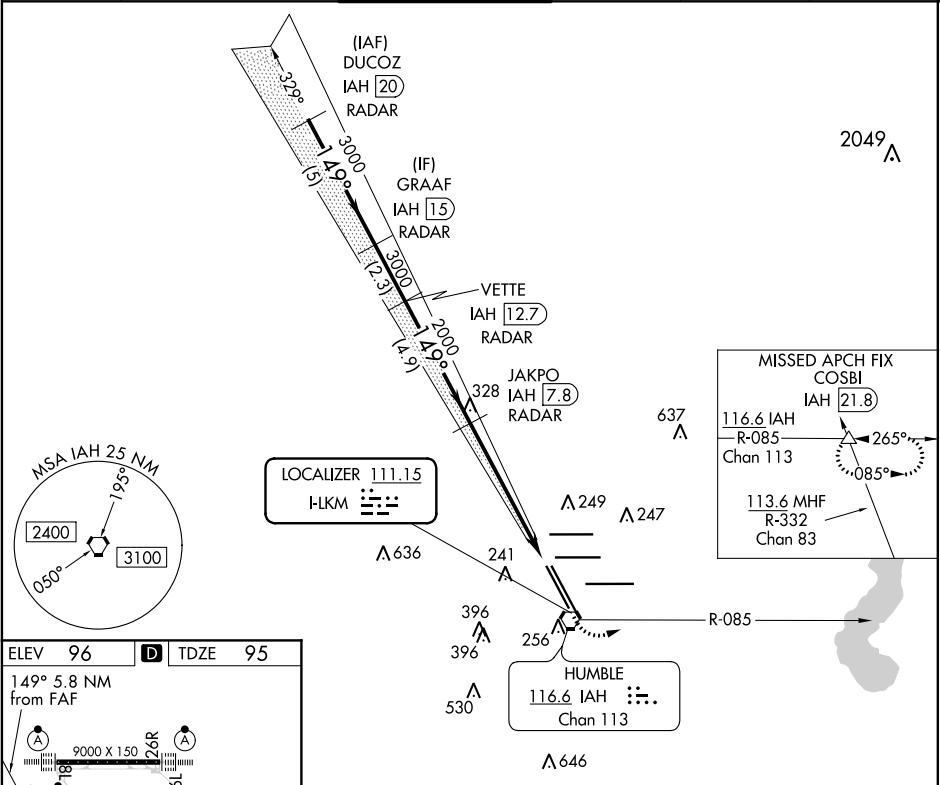


LOC I-LKM	APP CRS	Rwy Idg	9999
111.15	149°	TDZE	95
		Apt Elev	96

ILS or LOC RWY 15R  
GEORGE BUSH INTERCONTINENTAL/HOUSTON (IAH)

RADAR required for procedure entry. DME or RADAR required.			MALSR	MISSED APPROACH: Climb to 1000 then climbing left turn to 2000 on IAH VORTAC R-085 to COSBI INT/IAH 21.8 DME and hold.
DME from IAH VORTAC. Simultaneous reception of I-LKM and IAH DME required. For inop ALS, increase S-ILS 15R Cat E visibility to RVR 4000, and S-LOC 15R Cat C/D/E visibility to 1 3/8 SM.				

D-ATIS 124.05	HOUSTON APP CON 120.05 379.1 EAST 124.35 316.15 WEST	HOUSTON TOWER 127.3 288.25	GND CON 121.7	CLNC DEL 128.1	CPDLC
------------------	--	-------------------------------	------------------	-------------------	-------



SC-5, 03 DEC 2020 to 31 DEC 2020

SC-5, 03 DEC 2020 to 31 DEC 2020