

LOC/DME I-BZU <b>111.55</b> Chan <b>52</b> (Y)	APP CRS <b>087°</b>	Rwy Idg <b>9000</b> TDZE <b>94</b> Apt Elev <b>96</b>
--	------------------------	--

**ILS RWY 8L (CAT II & III)**  
**GEORGE BUSH INTERCONTINENTAL/HOUSTON (IAH)**

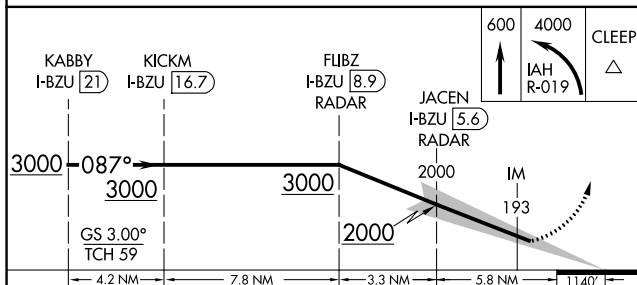
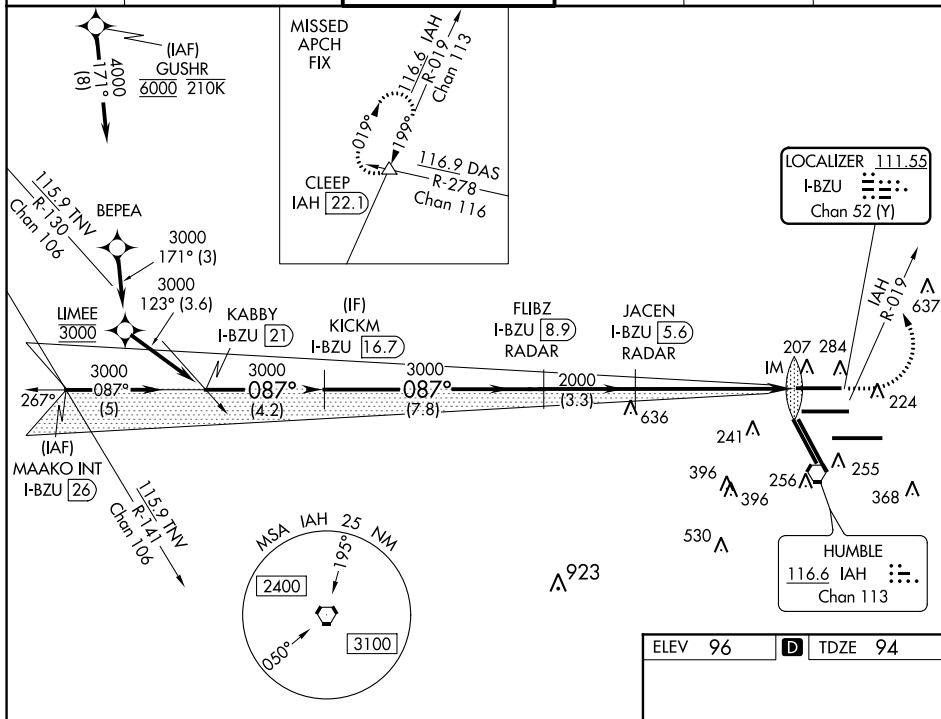
DME required. From GUSHR: RNAV 1-GPS required.

**T** Simultaneous approach authorized with Rwy 8R and Rwy 9.  
CAT II: RVR 1000 authorized with specific OPSPEC, MSPEC,  
or LOA approval and use of autoland or HUD to touchdown.

ALSF-2



ATIS 124.05	HOUSTON APP CON 120.05 379.1 EAST 124.35 316.15 WEST	HOUSTON TOWER 120.725 290.2	GND CON 118.575	CLNC DEL 128.1	CPDLC
----------------	--	--------------------------------	--------------------	-------------------	-------



CATEGORY	A	B	C	D
S-ILS 8L	CAT II RA 108/12 100 DA 194			
S-ILS 8L	CAT III RVR 06			

## CATEGORY II & III ILS - SPECIAL AIRCREW & AIRCRAFT CERTIFICATION REQUIRED

