

LOC/DME I-JYV 109.7 Chan 34	APP CRS 267°	Rwy Idg 9402 TDZE 95 Apt Elev 96
---	------------------------	---

ILS RWY 26L (CAT II & III)

GEORGE BUSH INTERCONTINENTAL/HOUSTON (T A H)

DME required. From BOZZZ, GARRR: RNAV 1-GPS required.

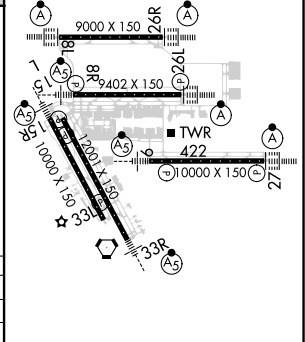
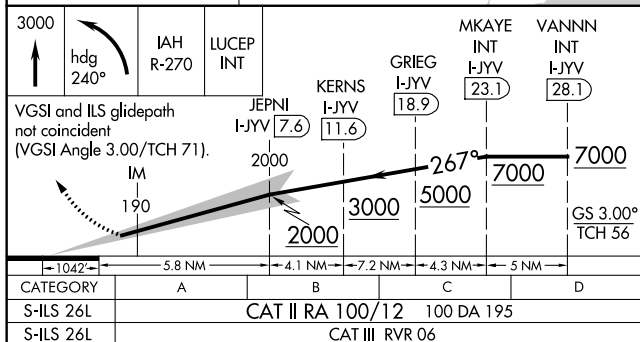
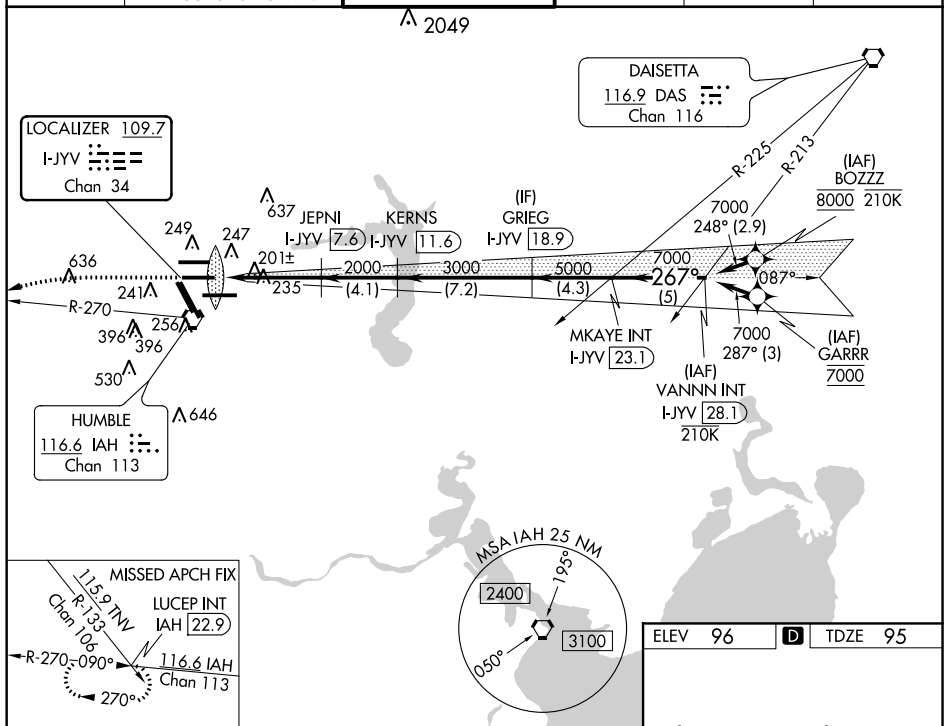
T Simultaneous approach authorized with Rwy 26R and Rwy 27.
Cat II: RVR 1000 authorized with specific OPSPEC, MSPEC, or
LOA approval and use of autoland or HUD to touchdown.

ALSF-2



MISSED APPROACH: Climb to 3000 then left turn heading 240° and IAH VORTAC R-270 to LUCEP INT/IAH 22.9 DME and hold.

D-ATIS 124.05	HOUSTON APP CON 120.05 379.1 EAST 124.35 316.15 WEST	HOUSTON TOWER 125.35 290.2	GND CON 118.575	CLNC DEL 128.1	CPDLC
-------------------------	--	--------------------------------------	---------------------------	--------------------------	-------



TDZ/CL Rwy 8R, 8L, 15R, 26R, 26L,
27 and 33L
HIRL a|| Rwy 8

CATEGORY II & III ILS - SPECIAL AIRCREW
& AIRCRAFT CERTIFICATION REQUIRED