

LAAS CH 21073 RPI GBZU	APP CRS 087°	Rwy Idg 9000 TDZE 95 Apt Elev 96
--	------------------------	---

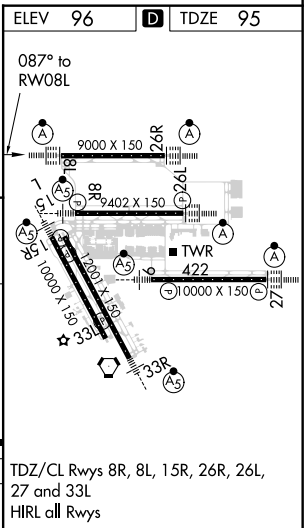
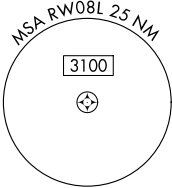
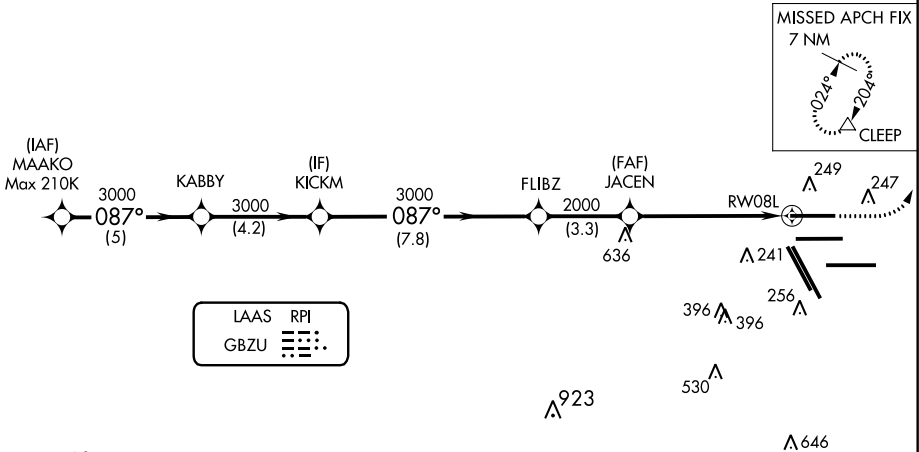
GLS RWY 8L

GEORGE BUSH INTERCONTINENTAL/HOUSTON (IAH)

NA	For inop ALSF, increase GLS all Cats visibility to RVR 4000. Simultaneous approach authorized with Rwy 8R and Rwy 9. DME/DME RNP-0.3 NA. GPS Required. Autoland approach NA. Use of FD or AP providing RNAV track guidance required during simultaneous operations.	ALSF-2 	MISSED APPROACH: Climb to 580 then climbing left turn to 4000 direct CLEEP and hold.
-----------	---	------------	--

D-ATIS 124.05	HOUSTON APP CON 120.05 379.1 EAST 124.35 316.15 WEST	HOUSTON TOWER 120.72 290.2	GND CON 121.7	CLNC DEL 128.1	CPDLC
-------------------------	--	--------------------------------------	-------------------------	--------------------------	-------

RADAR REQUIRED



GLS unusable inside DA.				
MAAKO	KABBY	KICKM	FLIBZ	JACEN
3000	3000	3000	3000	2000
GP 3.00° TCH 59'				
5 NM	4.2 NM	7.8 NM	3.3 NM	5.8 NM
CATEGORY	A	B	C	D
GLS	DA	295/18	200 (200-1/2)	