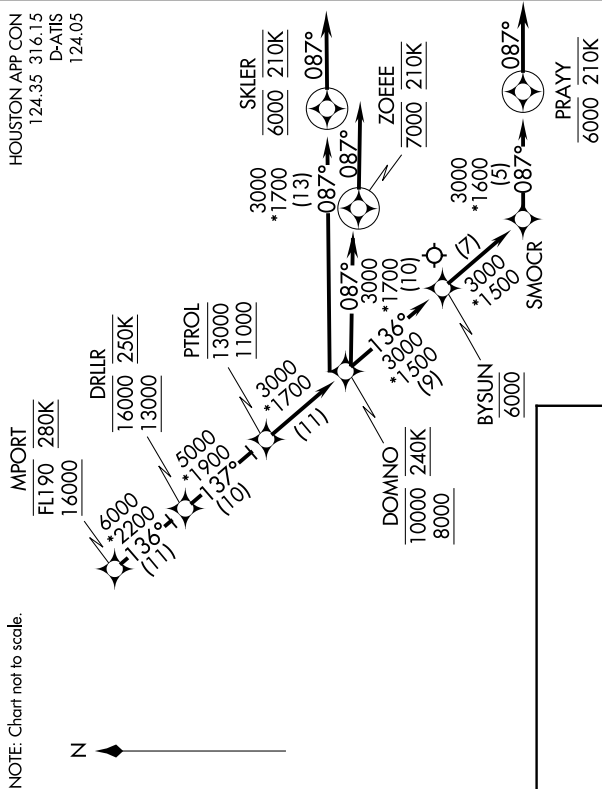


DRLLR FIVE ARRIVAL (RNAV) Arrival Routes

HOUSTON, TEXAS



NOTE: RADAR required.

NOTE: RNAV 1.

NOTE: DME/DME/IRU or GPS required.

NOTE: Turbojet and turboprop aircraft capable of 280K or greater only.

NOTE: Fly the Runway 26R transition; Houston Approach control may assign a different transition on initial contact.

NOTE: Corresponding RNAV STAR is GUSHR. Expect GUSHR when IAH is landing east.

NOTE: Turbojet aircraft descend via each number until intercepting 280K. Maintain 280K until slowed by the STAR.

ARRIVAL ROUTE DESCRIPTION

From MPORT on track 136° to cross DRLLR between 13000 and 16000 and at 250K, then on track 137° to cross PTROL between 11000 and 13000, then on track 137° to cross DOWNO between 8000 and 10000 and at 240K.

LANDING RWY 26L: From DOMNO on track 087° to cross ZOEZE at 7000 and at 210K, then on track 087°. Expect vectors to final approach course.

LANDING RWY 26R: From DOMNO on track 087° to cross SKLER at 6000 and at 210K, then on track 087°. Expect vectors to final approach course.

LANDING RWY 27: From DOMNO on track 136° to cross BYSJUN at 6000, then on track 1136° to SMOCR, then on track 087° to cross PRAYY at 6000 and at 210K, then on track 087°. Expect vectors to final approach course.

SC-5, 03 DEC 2020 to 31 DEC 2020

DRLLR FIVE ARRIVAL (RNAV) Arrival Routes

HOUSTON, TEXAS

(MPORT.DRLLR5) 26MAY16

GEORGE BUSH INTERCONTINENTAL/HOUSTON (IAH)