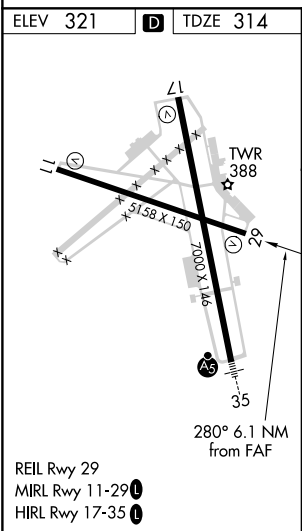
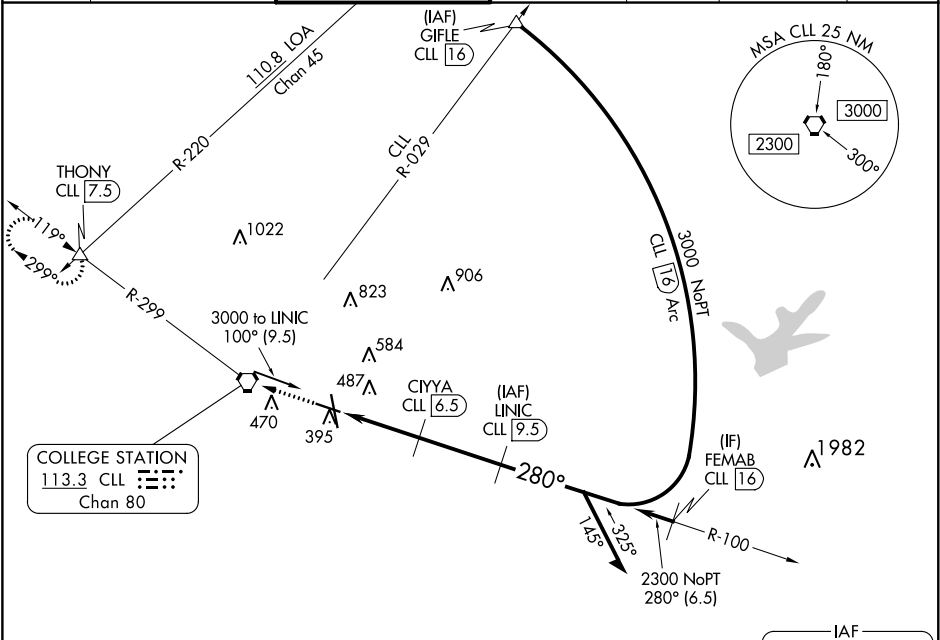


VORTAC CLL	APP CRS	Rwy Idg
113.3	280°	5158
Chan 80		TDZE 314
		Apt Elev 321

VOR RWY 29
EASTERWOOD FIELD (CLL)

DME required for procedure entry. DME required.		MISSED APPROACH: Climb to 2500 direct CLL VORTAC then on CLL VORTAC R-299 to THONY INT/CLL 7.5 DME and hold.			
▼ ▲ Rwy 29 helicopter visibility reduction below ¾ SM NA.		ATIS	HOUSTON APP CON	EASTERWOOD TOWER ★	GND CON
		126.85	134.3 360.85	118.5 (CTAF) 284.7	128.7 284.7
					CLNC DEL
					128.7
					CLNC DEL
					120.4
					(when twr closed)
					UNICOM
					122.95



<div>2500 ↑ CLL R-299 THONY CLL R-299 △</div>				<div>3000 NoPT 338° (1.4.4) LINIC CLL 9.5 Remain within 10 NM</div>	
<div>CLL 3.5 CLL 4.8 CIYYA CLL 6.5 3.00° TCH 54 1320 2300 280° 3000 100°</div>					
<div>1.4 NM 1.7 NM 3 NM</div>					
CATEGORY		A	B	C	D
S-29		800-1 486 (500-1)		800-1 $\frac{3}{8}$	486 (500-1 $\frac{3}{8}$)
CIRCLING		860-1 539 (600-1)	880-1 559 (600-1)	1000-2 679 (700-2)	1180-2 $\frac{3}{4}$ 859 (900-2 $\frac{3}{4}$)

SC-5, 03 DEC 2020 to 31 DEC 2020

SC-5, 03 DEC 2020 to 31 DEC 2020