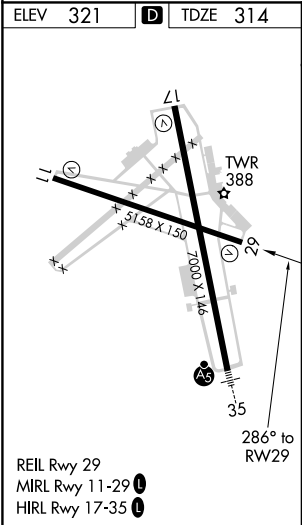
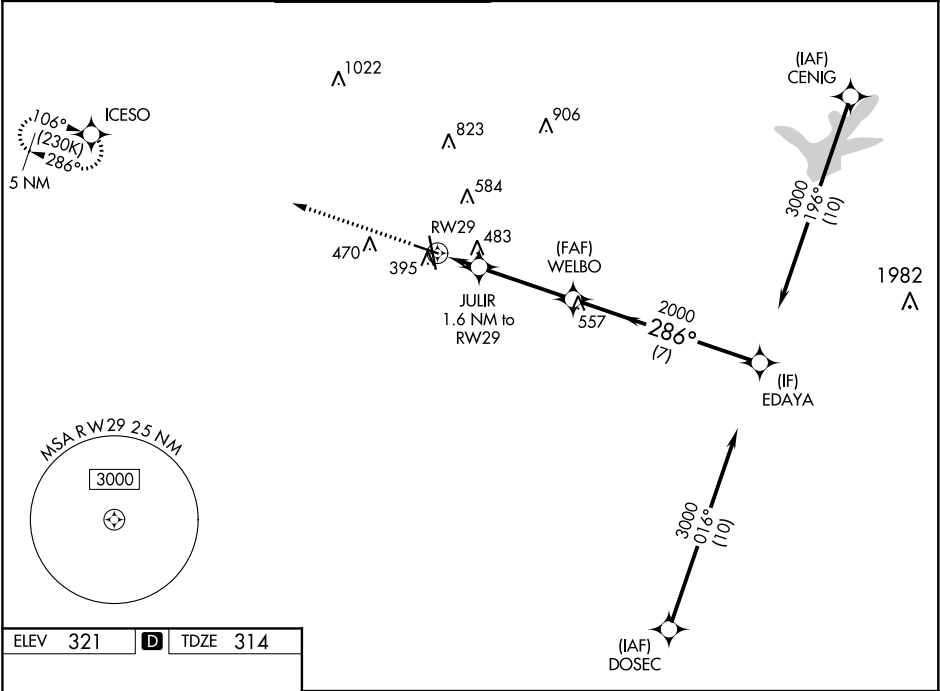


WAAS CH <b>87022</b> <b>W29A</b>	APP CRS <b>286°</b>	Rwy Idg TDZE Apt Elev	<b>5158</b> <b>314</b> <b>321</b>
--	------------------------	-----------------------------	---

RNAV (GPS) RWY 29

EASTERWOOD FIELD (CLL)

RNP APCH.		MISSED APPROACH: Climb to 2000 direct ICESO and hold.			
<div><div></div><div>Baro-VNAV NA when using Caldwell altimeter setting. For uncompensated Baro-VNAV systems, LNAV/VNAV NA below -3°C or above 54°C. Rwy 29 helicopter visibility reduction below ¾ SM NA.</div></div>		ATIS <b>126.85</b>	HOUSTON APP CON <b>134.3 360.85</b>	EASTERWOOD TOWER ★ <b>118.5 (CTAF) 284.7</b>	GND CON <b>128.7 284.7</b>
		CLNC DEL <b>128.7</b>	CLNC DEL <b>120.4</b> <small>(when twr closed)</small>	UNICOM <b>122.95</b>	



2000

↑

ICESO

✦

\*LNAV only.

EDAYA

3000

GP 3.00°

TCH 54

WELBO

2000

JULIR

1.6 NM to RW29

286°

2000


860\*

RW29

1.6 NM

3.5 NM

7 NM

CATEGORY	A	B	C	D	E
LPV DA	564-¾ 250 (300-¾)				
LNAV/VNAV DA	762-1⅜ 448 (500-1⅜)				
LNAV MDA	740-1	426 (500-1)	740-1¼	426 (500-1¼)	
 CIRCLING	860-1 539 (600-1)	880-1 559 (600-1)	1000-2 679 (700-2)	1180-2¾ 859 (900-2¾)	1180-3 859 (900-3)