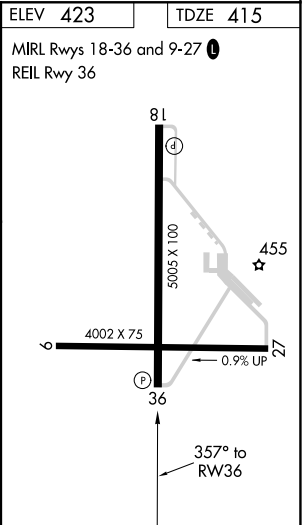
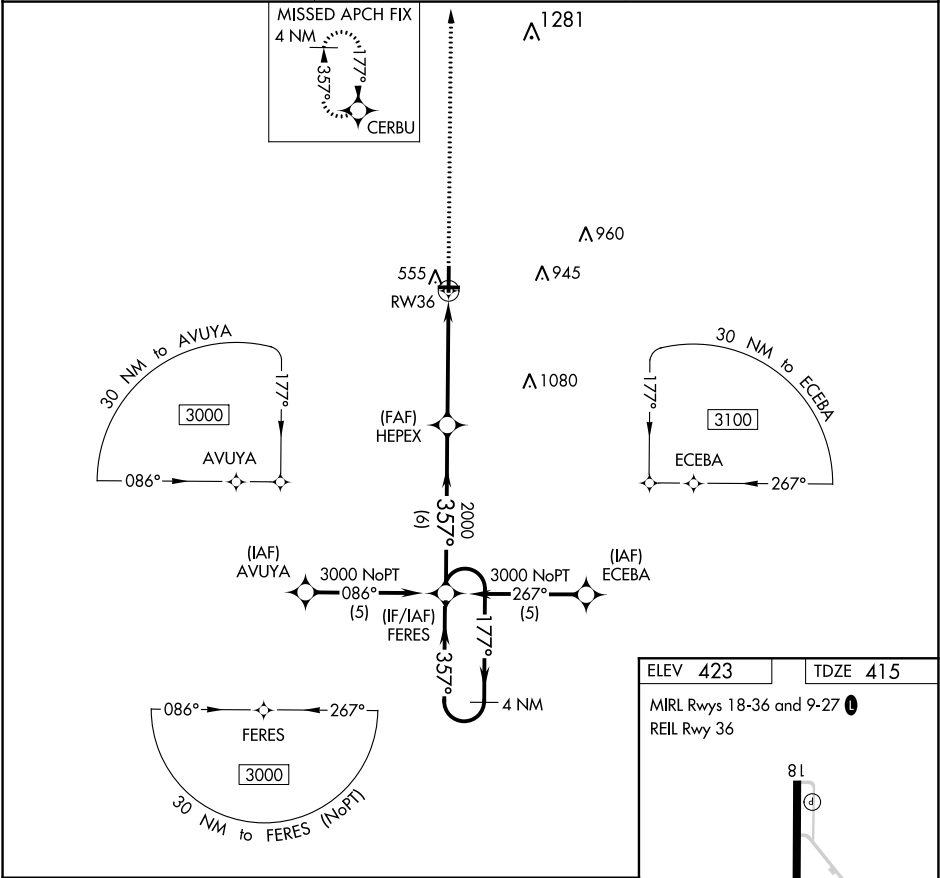


APP CRS	Rwy Idg	5005
357°	TDZE	415
	Apt Elev	423

RNAV (GPS) RWY 36
PALESTINE MUNI (PSN)

RNP APCH	VDP NA with C. David Campbell Field-Corsicana Muni altimeter setting. When local altimeter setting not received, use C. David Campbell Field-Corsicana Muni altimeter setting and increase all MDA 100 feet. Circling Rwy 9, 27 NA at night.	MISSED APPROACH: Climb to 2500 direct CERBU WP and hold.
----------	--	--

AWOS-3 118.025	FORT WORTH CENTER 135.25 265.1	UNICOM 122.7 (CTAF) 0
-------------------	-----------------------------------	--------------------------



4 NM Holding Pattern		FERES		VGSI and descent angles not coincident (VGSI Angle 3.00/TCH 35).		2500	CERBU
3000 ← 177° 357° →		357°		HEPEX 2000 3.04° TCH 40		1.2 NM to RW36 RW36	
		6 NM		3.6 NM		1.2	
CATEGORY	A		B		C		D
LNAV MDA	820-1		405 (400-1)		820-1¼		405 (400-1¼)
CIRCLING	860-1 437 (500-1)		1040-1 617 (700-1)		1040-1¾ 617 (700-1¾)		1060-2 637 (700-2)