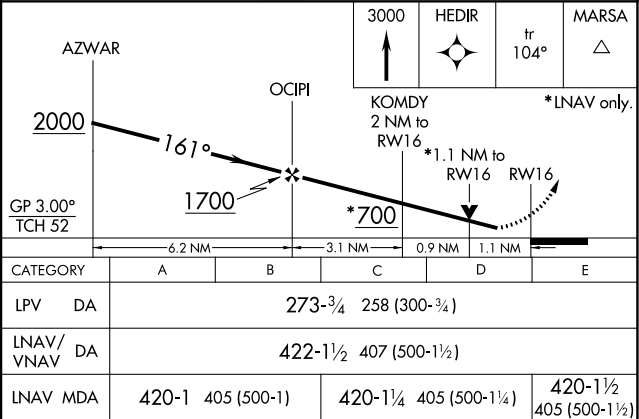
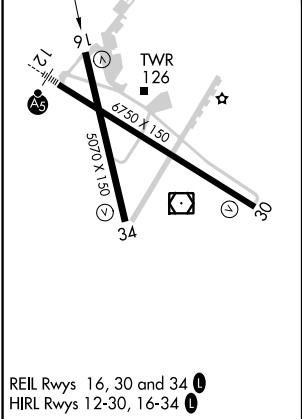
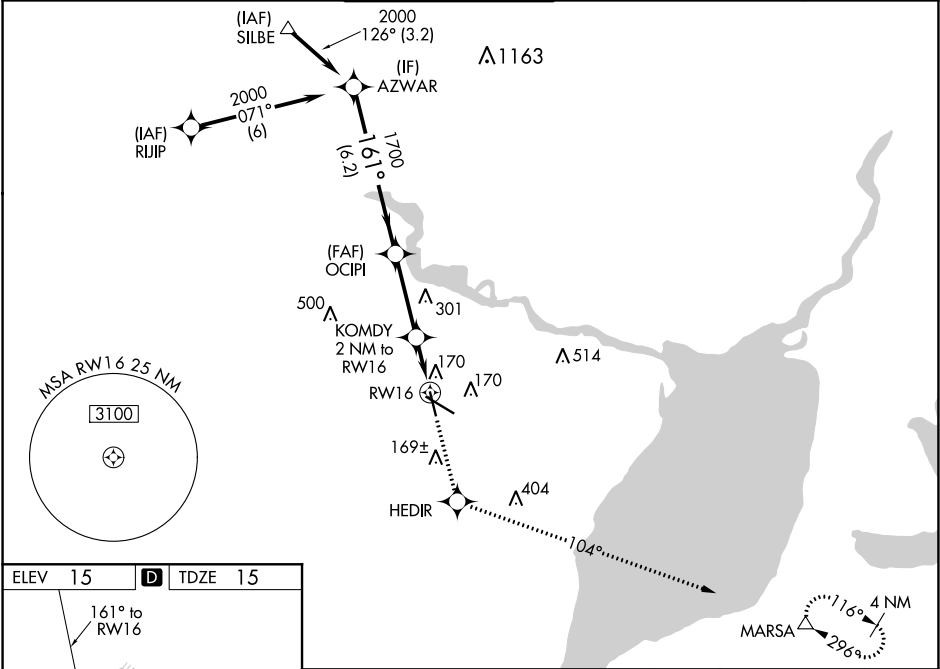


WAAS CH 82316 W16A	APP CRS 161°	Rwy Idg TDZE 15 Apt Elev 15	5070
--	------------------------	---	-------------

RNAV (GPS) RWY 16
JACK BROOKS RGNL (BPT)

RNP APCH.				MISSED APPROACH: Climb to 3000 direct HEDIR and via track 104° to MARSA and hold.	
RADAR required.					
<div><div><div></div><div></div></div><div>Baro-VNAV NA when using Orange County altimeter setting. For uncompensated Baro-VNAV systems, LNAV/VNAV NA below -15°C (5°F) or above 49°C (120°F). Rwy 16 helicopter visibility reduction below ¾ SM NA. When local altimeter setting not received, use Orange County altimeter setting: increase LPV DA to 305; increase LNAV/VNAV DA to 454 feet; increase all MDAs 40 feet, increase LPV all Cats visibility ¼ SM and LNAV Cat D visibility ¼ SM. VDP NA when using Orange County altimeter setting.</div></div>					
ATIS 126.3	HOUSTON APP CON 121.3 377.1	BEAUMONT TOWER ★ 119.5 (CTAF) 0	GND CON 124.85	CLNC DEL 118.3	UNICOM 122.95



SC-5, 03 DEC 2020 to 31 DEC 2020

SC-5, 03 DEC 2020 to 31 DEC 2020