

VOR/DME VCT	APP CRS	Rwy Idg	9111
109.0	127°	TDZE	115
Chan 27		Apt Elev	115

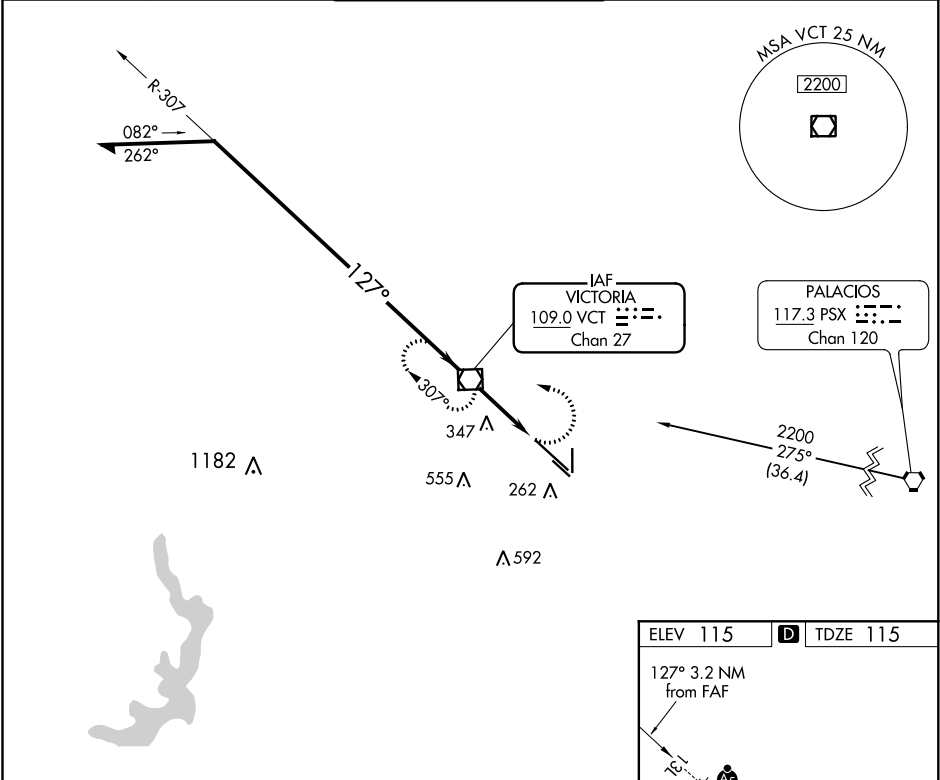
VOR RWY 13L
VICTORIA RGNL (VCT)

⚠ VDP NA when using Port Lavaca altimeter setting. When local altimeter setting not received, use Port Lavaca altimeter setting and increase all MDA 60 feet. Increase S-13L Cats C/D/E visibility to 1½ mile. For inop MALSR, increase S-13L Cat C/D/E visibility to 1½ mile. For inop MALSR, when using Port Lavaca altimeter setting, increase S-13L Cat C/D/E visibility to 1½ mile.

MALSR

MISSED APPROACH:
Climbing left turn to 2200 direct VCT VOR/DME and hold, continue climb-in-hold to 2200.

ATIS 119.025	HOUSTON CENTER 135.05 353.6	VICTORIA TOWER ★ 126.075 (CTAF) 0 257.95	GND CON 120.525 239.25	UNICOM 122.7
-----------------	--------------------------------	---	---------------------------	-----------------



Remain within 15 NM

CATEGORY	A	B	C	D	E
S-13L	600-½	485 (500-½)	600-1	485 (500-1)	
CIRCLING	600-1	485 (500-1)	600-1½ 485 (500-1½)	680-2 565 (600-2)	NA

ELEV 115 **D** TDZE 115

MIRL Rwy 18-36
REIL Rwy 18 and 36
HIRL Rwy 13L-31R **1**

FAF to MAP 3.2 NM					
Knots	60	90	120	150	180
Min:Sec	3:12	2:08	1:36	1:17	1:04