

WAAS CH 82726 W31A	APP CRS 308°	Rwy Idg 9111 TDZE 106 Apt Elev 115
--	------------------------	---

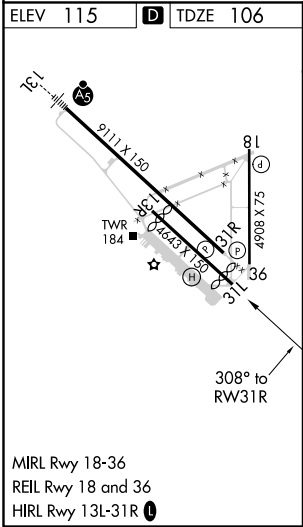
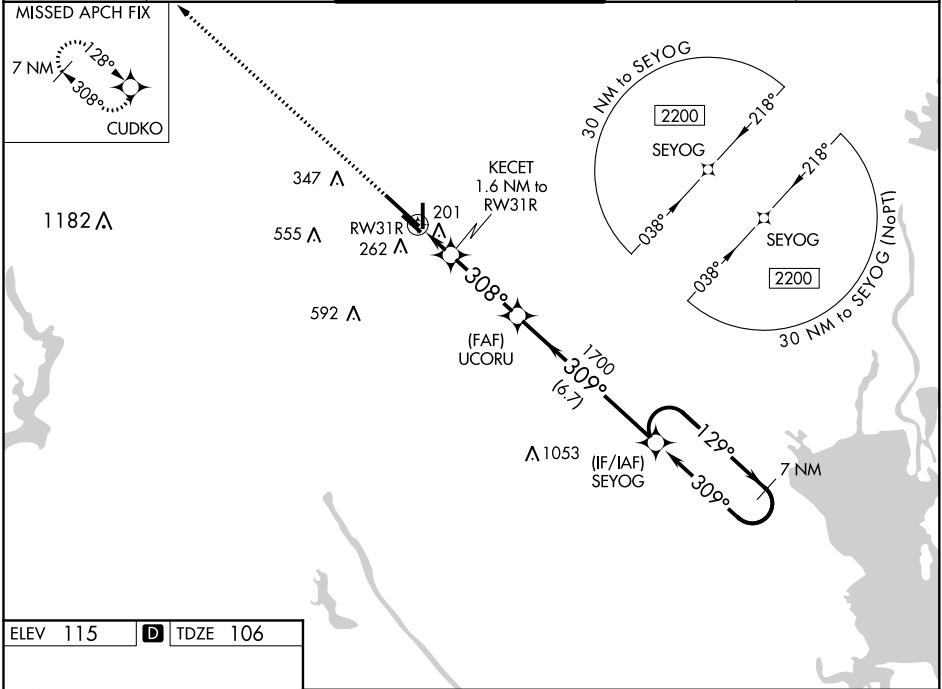
RNAV (GPS) RWY 31R

VICTORIA RGNL (VCT)

⚠ Baro-VNAV NA when using Port Lavaca altimeter setting. For uncompensated Baro-VNAV systems, LNAV/VNAV NA below -15°C (5°F) or above 43°C (109°F). When local altimeter setting not received, use Port Lavaca altimeter setting and increase all DA 52 feet and all MDA 60 feet. Increase LNAV/VNAV all Cats visibility to 1 mile and LNAV Cats C/D/E visibility to 1½ mile. DME/DME RNP-0.3 NA. VDP NA with Port Lavaca altimeter setting.

MISSED APPROACH: Climb to 2200 direct CUDKO and hold.

ATIS 119.025	HOUSTON CENTER 135.05 353.6	VICTORIA TOWER ★ 126.075 (CTAF) 257.95	GND CON 120.525 239.25	UNICOM 122.7
------------------------	---------------------------------------	--	----------------------------------	------------------------



2200 CUDKO		SEYOG		7 NM Holding Pattern	
* LNAV only.		KECET 1.6 NM to RW31R		UCURU 1700	
RW31R		* 1 NM to RW31R		129° → 2200	
308°		* 660		← 309°	
1 NM		0.7		3.2 NM	
3.2 NM		6.7 NM		GP 3.00° TCH 55	
CATEGORY	A	B	C	D	E
LPV DA	306-¾ 200 (200-¾)				
LNAV/VNAV DA	374-⅞ 268 (300-⅞)				
LNAV MDA	460-1 354 (400-1)				
CIRCLING	580-1	465 (500-1)	580-1½ 465 (500-1½)	680-2 565 (600-2)	NA