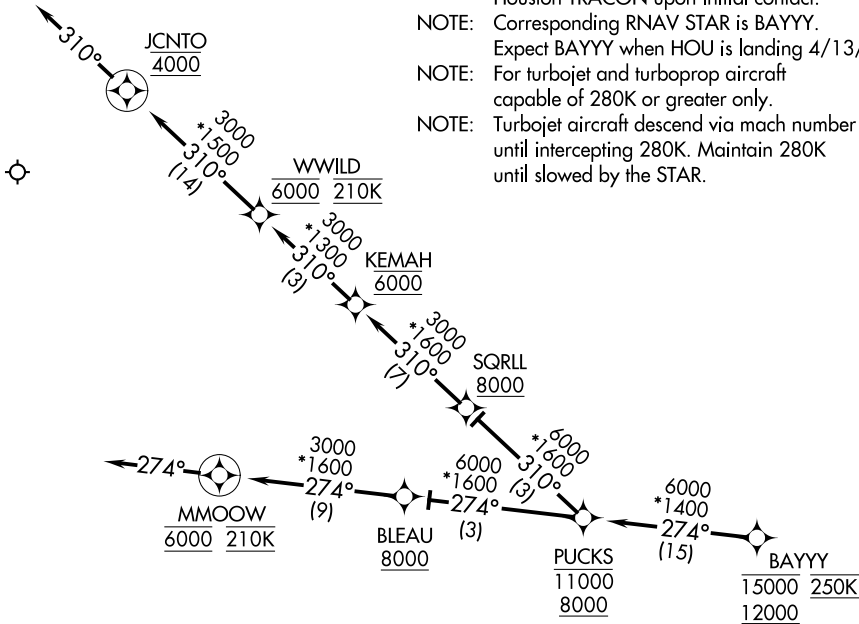


HOUSTON APP CON  
119.625 226.675  
D-ATIS  
124.6

- NOTE: RADAR required.
- NOTE: RNAV 1.
- NOTE: DME/DME/IRU or GPS required.
- NOTE: Expect runway assignment from Houston TRACON upon initial contact.
- NOTE: Corresponding RNAV STAR is BAYYY.
- NOTE: Expect BAYYY when HOU is landing 4/13/17.
- NOTE: For turbojet and turboprop aircraft capable of 280K or greater only.
- NOTE: Turbojet aircraft descend via mach number until intercepting 280K. Maintain 280K until slowed by the STAR.



ARRIVAL ROUTE DESCRIPTION

From BAYYY on track 274° to cross PUCKS between 8000 and 11000.

LANDING RWY 22: From PUCKS on track 310° to cross SQRLL at or above 8000, then on track 310° to cross KEMAH at 6000, then on track 310° to cross WWILD at 6000 and at 210K, then on track 310° to cross JCNT0 at 4000, then on track 310°. Expect vectors to final approach course.

LANDING RWYS 31L/R, 35: From PUCKS on track 274° to cross BLEAU at or above 8000, then on track 274° to cross MMOOW at 6000 and at 210K, then on track 274°. Expect vectors to final approach course.