

SC-5, 03 DEC 2020 to 31 DEC 2020

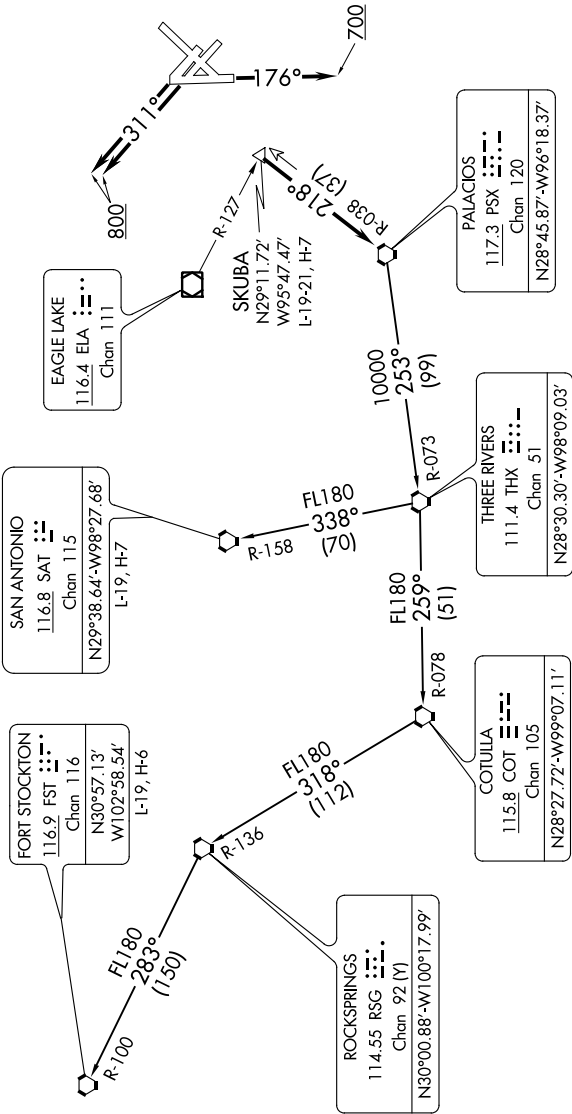
TOP ALTITUDE:
16000

TAKEOFF MINIMUMS

Rwys 13L/R, 31L/R, 35: Standard.
Rwy 4: 300-1 or standard with minimum
climb of 270' per NM to 300.
Rwy 17: 300-1.
Rwy 22: Standard with minimum climb
of 290' per NM to 1500.



DATIS
124.6
CLNC DEL
125.45
CPD/C
GND CON
121.9
HOBBY TOWER
118.7 256.9
HOUSTON DEP CON
127.125 269.075



(NARRATIVE ON FOLLOWING PAGE)

NOTE: RADAR required.
NOTE: Chart not to scale.

SC-5, 03 DEC 2020 to 31 DEC 2020