

D-ATIS
124.6
CLNC DEL
125.45
CPDLC
GND CON
121.9
HOBBY TOWER
118.7 256.9
HOUSTON DEP CON
132.25 285.425

TOP ALTITUDE:
16000

NOTE: RADAR required.
NOTE: DME/DME/IRU or GPS required.
NOTE: RNAV 1

TAKEOFF MINIMUMS

Rwys 4, 13L/R, 17, 31L/R, 35: Standard with minimum climb of 500' per NM to 560.
Rwy 22: Standard with minimum climb of 500' per NM to 700.

DEPARTURE ROUTE DESCRIPTION

TAKEOFF RWY 4: Climb heading 041° to 560 for
RADAR vectors to KNTKY, thence

TAKEOFF RWYS 13L/R: Climb heading 131° to 560
for RADAR vectors to KNTKY, thence

TAKEOFF RWY 17: Climb heading 176° to 560 for
RADAR vectors to KNTKY, thence

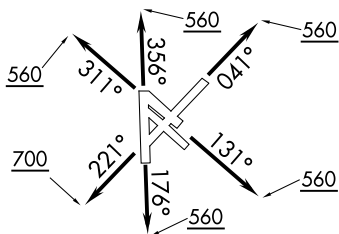
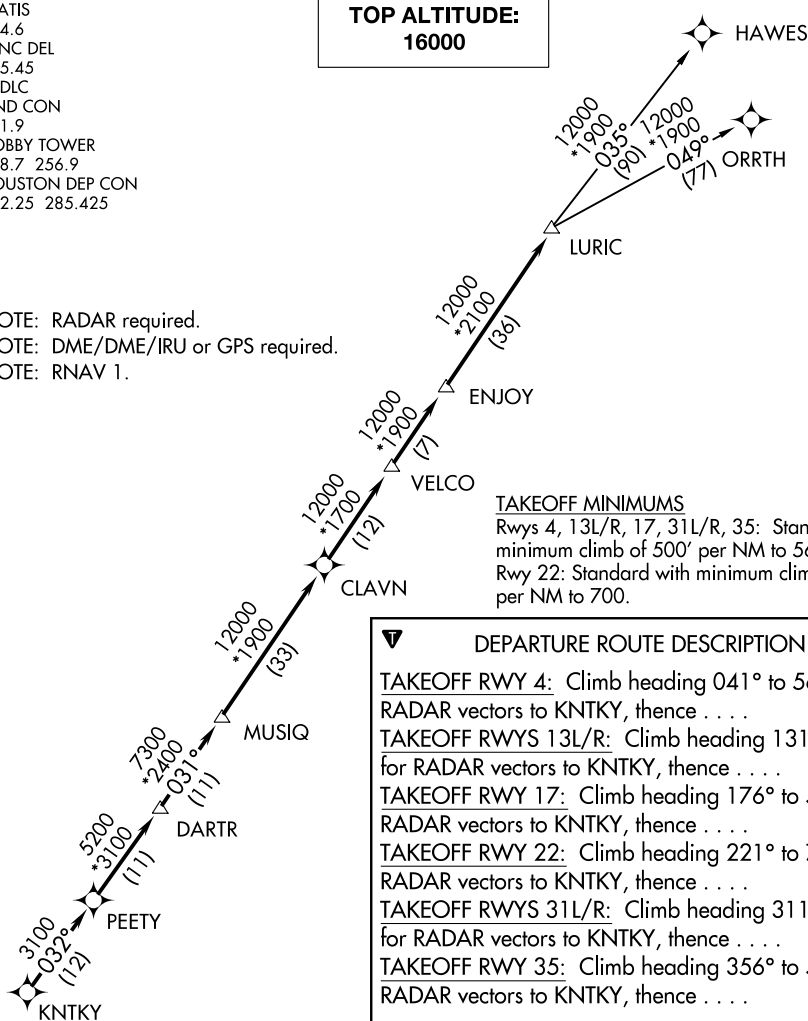
TAKEOFF RWY 22: Climb heading 221° to 700 for
RADAR vectors to KNTKY, thence

TAKEOFF RWYS 31L/R: Climb heading 311° to 560
for RADAR vectors to KNTKY, thence

TAKEOFF RWY 35: Climb heading 356° to 560 for
RADAR vectors to KNTKY, thence

... on track 032° to PEETY, then on track 032° to DARTR, then on track 031° to MUSIQ, then on track 031° to CLAVN, then on track 031° to VELCO, then on track 031° to ENJOY, then on track 031° to LURIC, then on (transition). Maintain 16000 or as assigned by ATC. Expect filed altitude 10 minutes after departure.

HAWES TRANSITION (LURIC7.HAWES)
ORRTH TRANSITION (LURIC7.ORRTH)



NOTE: Chart not to scale