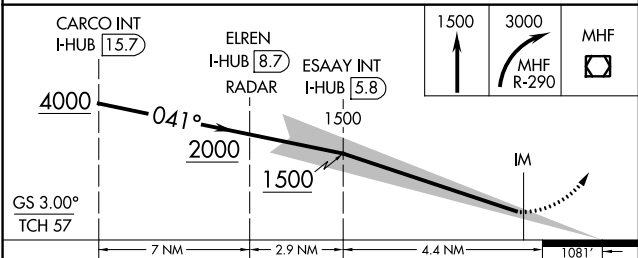
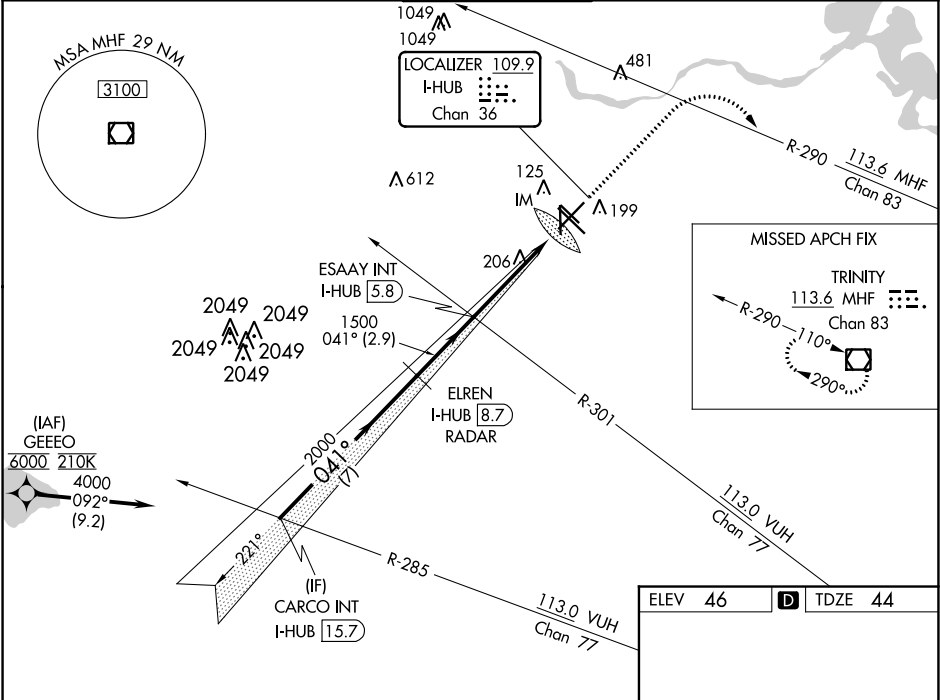


LOC/DME I-HUB 109.9 Chan 36	APP CRS 041°	Rwy Idg TDZE 44 Apt Elev 46
---	------------------------	---

ILS RWY 4 (SA CAT I)
WILLIAM P HOBBY (HOU)

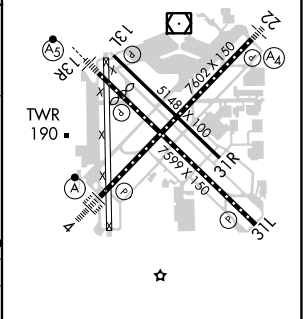
Aircraft not GPS equipped - RADAR required for procedure entry. From GEEEO: RNAV 1- GPS required.	ALSIF-2 	MISSED APPROACH: Climb to 1500 then climbing right turn to 3000 on MHF VOR/DME R-290 to MHF VOR/DME and hold.
Requires specific OPSPEC, MSPEC, or LOA approval and use of HUD to DH.		

D-ATIS 124.6	HOUSTON APP CON 120.05 379.1 EAST 124.35 316.15 WEST	HOBBY TOWER 118.7 256.9	GND CON 121.9	CLNC DEL 125.45	CPDLC
------------------------	--	-----------------------------------	-------------------------	---------------------------	-------



CATEGORY	A	B	C	D
S-ILS 4	RA 146/14 150 DA 194			

SA CATEGORY I ILS - SPECIAL AIRCREW
& AIRCRAFT CERTIFICATION REQUIRED



SC-5, 03 DEC 2020 to 31 DEC 2020

SC-5, 03 DEC 2020 to 31 DEC 2020