

WAAS CH 97629 W35A	APP CRS 354°	Rwy Idg TDZE 28 Apt Elev 33	9001
--	------------------------	---	-------------

RNAV (GPS) RWY 35L

ELLINGTON (EFD)

⚠

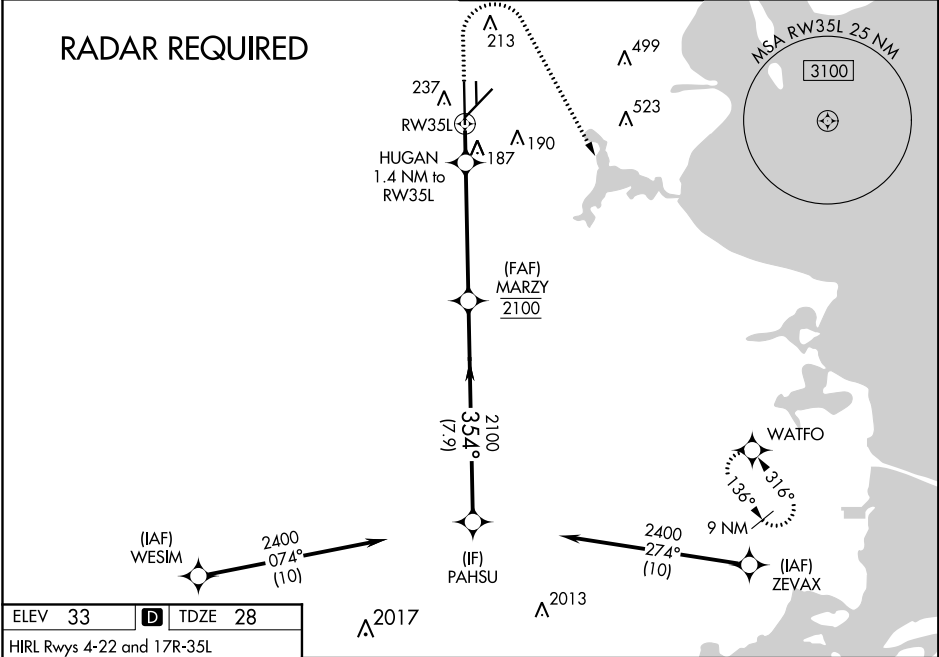
For uncompensated Baro-VNAV systems, LNAV/VNAV NA below -15°C (5°F) or above 43°C (109°F). Circling NA west of Rwy 17R-35L DME/DME RNP-0.3 NA. For inop MALSF, increase LNAV/VNAV all Cats visibility to 1½ mile, and LNAV Cats A and B visibility to 1 mile and Cats C, D and E visibility to 1½ mile. Inop table does not apply to LPV.

MALSF

MISSED APPROACH:

Climb to 1500 then climbing right turn to 3100 direct WATFO and hold.

ATIS 135.575 269.9	HOUSTON APP CON 134.45 284.0	ELLINGTON TOWER 126.05 253.5	GND CON 121.6 275.8
------------------------------	--	--	-------------------------------



ELEV 33 D TDZE 28

HIRL Rws 4-22 and 17R-35L
TDZ/CL Rws 17R, 22 and 35L

1500 ↑		3100 ↗		WATFO ✦		VGSI and RNAV glidepath not coincident (VGSI Angle 3.00/TCH 32).					
*LNAV only.						PAHSU 2400					
RW35L		HUGAN 1.4 NM to RW35L		MARZY 2100		354°		2100		GP 3.00° TCH 54	
1.4 NM		4.9 NM		7.9 NM							
CATEGORY	A		B		C		D		E		
LPV DA			228/40		200 (200-¾)						
LNAV/ VNAV DA			499/60		471 (500-1¼)						
LNAV MDA	440/40		412 (500-¾)		440/50		412 (500-1)				
CIRCLING	500-1		468 (500-1)		580-1½ 547 (600-1½)		640-2 607 (700-2)		700-2¼ 667 (700-2¼)		