

WAAS CH <b>70625</b> <b>W17A</b>	APP CRS <b>174°</b>	Rwy Idg <b>9001</b> TDZE <b>32</b> Apt Elev <b>33</b>
--	------------------------	---

RNAV (GPS) RWY 17R  
ELLINGTON (EFD)

**V** For uncompensated Baro-VNAV systems, LNAV/VNAV NA below -15°C (5°F) or above 43°C (109°F). DME/DME RNP-0.3 NA. Inop table does not apply to LPV DA. For inop MALSF, increase LNAV/VNAV all Cats and LNAV Cats A and B visibility to RVR 5500 and Cats C/D/E visibility to 1½ miles. Circling NA west of Rwy 17R-35L.

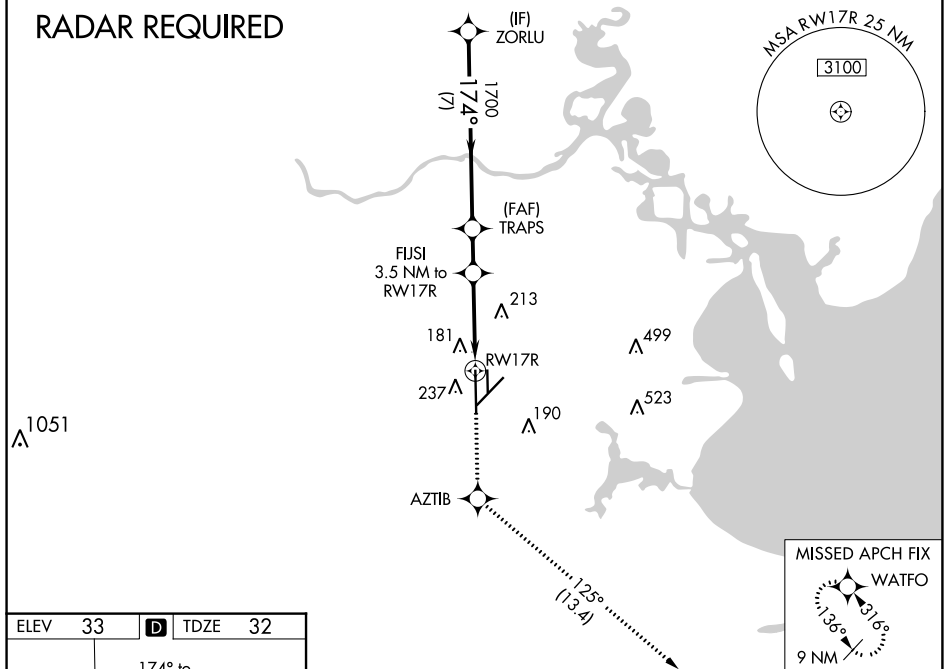
MALSF



**MISSED APPROACH:** Climb to 3100 direct AZTIB and on track 125° to WATFO and hold.

ATIS 135.575 269.9	HOUSTON APP CON 134.45 284.0	ELLINGTON TOWER 126.05 253.5	GND CON 121.6 275.8
-----------------------	---------------------------------	---------------------------------	------------------------

## RADAR REQUIRED



VGSI and RNAV glidepath not coincident (VGSI Angle 3.00°/TCH 48).				3100 ↑		AZTIB ✧		tr 125°		WATFO ✧	
ZORLU 2000				TRAPS 1700		FIJSI 3.5 NM to RW17R		*LNAV only.			
GP 3.00° TCH 52				174°		*1.4 NM to RW17R		RW17R			
7 NM				1.6 NM		2.2 NM		1.4 NM			
CATEGORY		A		B		C		D		E	
LPV DA				232/40		200 (200-¾)					
LNAV/ VNAV DA				363/40		331 (400-¾)					
LNAV MDA		500/40		468 (500-¾)		500/60		468 (500-1¼)			
CIRCLING		500-1		467 (500-1)		580-1½ 547 (600-1½)		640-2 607 (700-2)		700-2¼ 667 (700-2¼)	