

ASOS
119.275
CLNC DEL (When twr closed)
135.35
GND CON
118.625
GALVESTON TOWER ★
120.575 (CTAF)
HOUSTON DEP CON
134.45 284.0

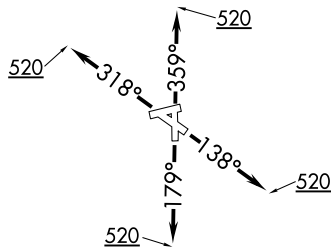
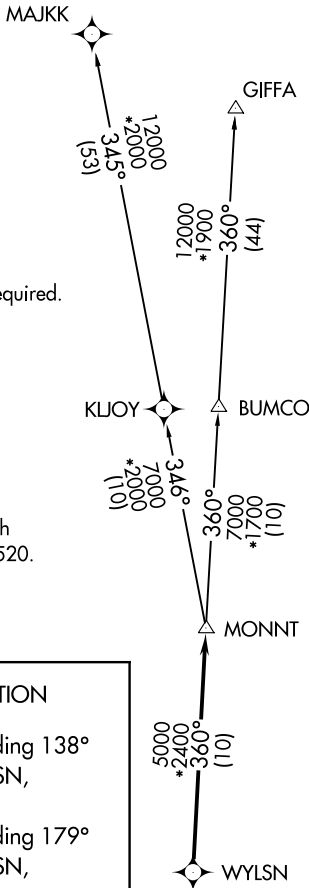
NOTE: RADAR required.
NOTE: DME/DME/IRU or GPS required.
NOTE: RNAV 1.

TAKEOFF MINIMUMS
Rwys 14, 18, 32, 36: Standard with
minimum climb of 500' per NM to 520.

DEPARTURE ROUTE DESCRIPTION

TAKEOFF RWY 14: Climb on heading 138°
to 520 for RADAR vectors to WYLSN,
thence. . . .
TAKEOFF RWY 18: Climb on heading 179°
to 520 for RADAR vectors to WYLSN,
thence. . . .
TAKEOFF RWY 32: Climb on heading 318°
to 520 for RADAR vectors to WYLSN,
thence. . . .
TAKEOFF RWY 36: Climb on heading 359°
to 520 for RADAR vectors to WYLSN,
thence. . . .
...on track 360° to MONNT, then on
(transition). Maintain ATC assigned altitude.
Expect filed altitude 10 minutes after departure.

GIFFA TRANSITION (WYLSN7.GIFFA)
MAJKK TRANSITION (WYLSN7.MAJKK)



NOTE: Chart not to scale.