

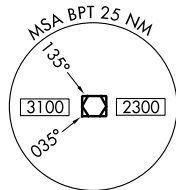
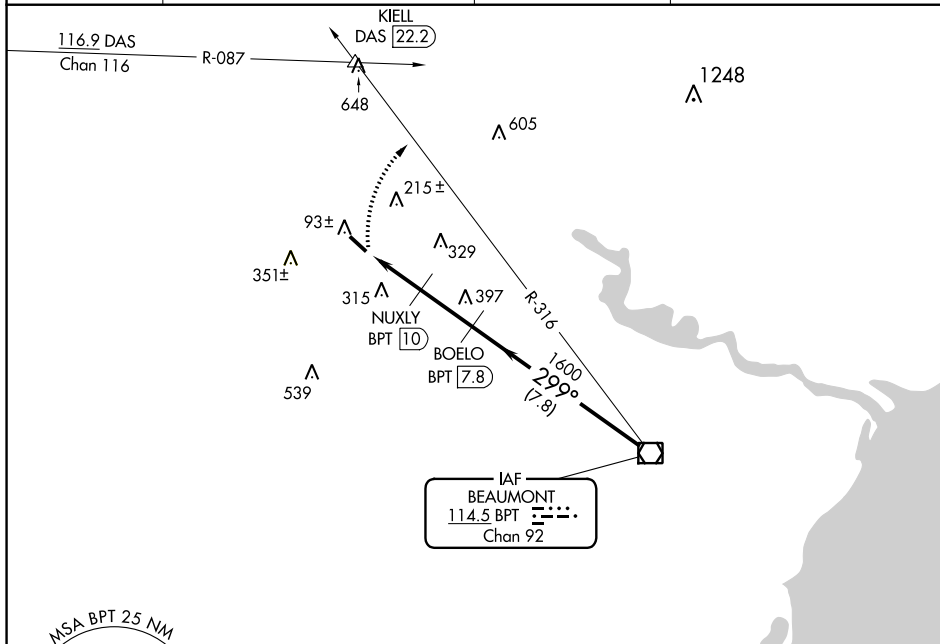
VOR/DME BPT <b>114.5</b> Chan 92	APP CRS <b>299°</b>	Rwy Idg <b>3934</b> TDZE <b>32</b> Apt Elev <b>32</b>
--	------------------------	---

VOR/DME RWY 31  
BEAUMONT MUNI (BMT)

**T** Use Beaumont-Port Arthur, TX (Jack Brooks Rgnl)  
**A** NA altimeter setting. Circling NA Rwy 16-34. Visibility  
reduction by helicopters NA.

**MISSED APPROACH:** Climbing right turn to 2000 via BPT R-316 to KIELL INT/DAS 22.2 DME.

AWOS-3P/T <b>118.425</b>	HOUSTON APP CON <b>121.3 377.1</b>	CLNC DEL <b>121.75</b>	UNICOM <b>123.0</b> (CTAF) <b>0</b>
-----------------------------	---------------------------------------	---------------------------	--



ELEV 32

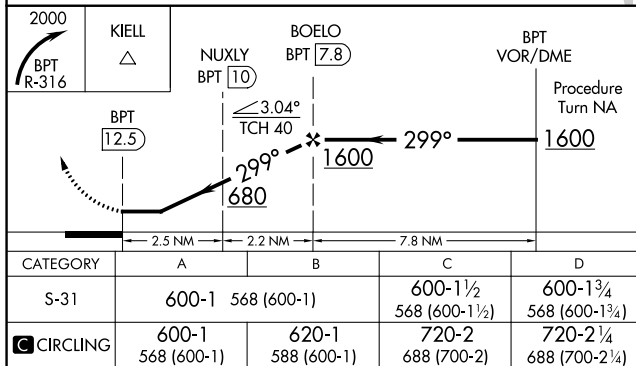
TDZE 32

4001 x 75

299° 4.7 NM from FAF

REIL Rwy 13

MRL Rwy 13-31



CATEGORY	A	B	C	D
S-31	600-1	568 (600-1)	600-1½ 568 (600-1½)	600-1¾ 568 (600-1¾)
C CIRCLING-2	600-1 568 (600-1)	620-1 588 (600-1)	720-2 688 (700-2)	720-2 ¼ 688 (700-2 ¼)