

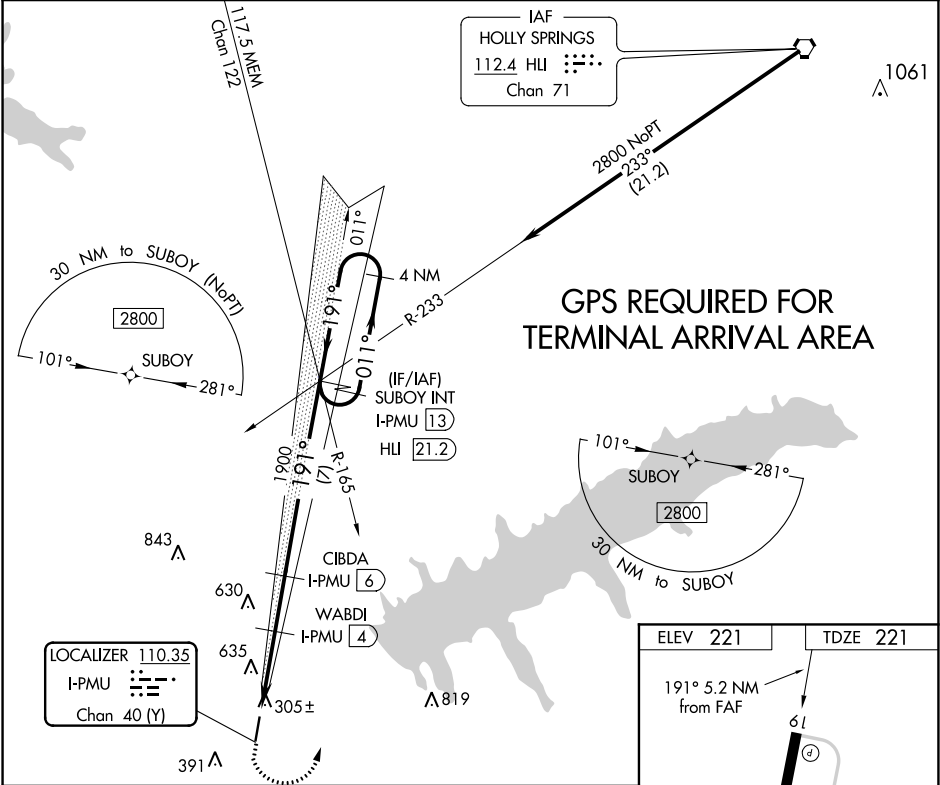
LOC/DME I-PMU 110.35 Chan 40 (Y)	APP CRS 191°	Rwy Idg 5001 TDZE 221 Apt Elev 221
------------------------------------------------------	------------------------	---------------------------------------------------------------

LOC RWY 19
PANOLA COUNTY (PMU)

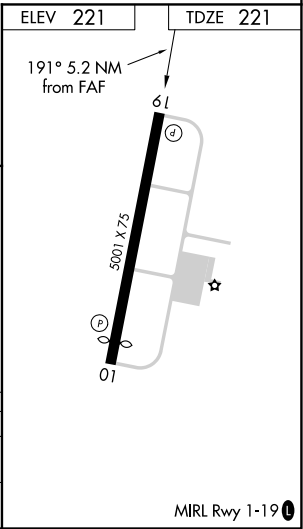
NA When local altimeter setting not received, use Oxford altimeter setting and increase all MDA 80 feet, increase S-19 Cats C, D visibility and Circling Cats B, C visibility ¼ mile. Rwy 19 helicopter visibility reduction below ¾ NA. VDP NA when using Oxford altimeter setting. DME required.

MISSED APPROACH: Climb to 1100 then climbing left turn to 2800 on heading 015° and MEM VORTAC R-165 to SUBOY INT/13 DME and hold.

AWOS-3PT 118.225	MEMPHIS CENTER 128.5 381.4	UNICOM 122.8 (CTAF) 0
----------------------------	--------------------------------------	----------------------------------------



GPS REQUIRED FOR
TERMINAL ARRIVAL AREA



1100	2800	MEM R-165	SUBOY INT	SUBOY INT I-PMU 13	4 NM Holding Pattern
hdg 015°					
I-PMU 0.9	I-PMU 1.6	WABDI I-PMU 4	CIBDA I-PMU 6		
1240	1900	191°	011°	2800	
0.7	2.5 NM	2 NM	7 NM		
CATEGORY	A	B	C	D	
S-19	560-1	339 (400-1)			
CIRCLING	740-1 519 (600-1)	1000-1 779 (800-1)	1000-2¼ 779 (800-2¼)	1120-3 899 (900-3)	