

WAAS
CH **60912**
W35A

APP CRS
347°

Rwy Idg
TDZE
Apt Elev

8500
194
194

RNAV (GPS) RWY 35

TUNICA MUNI (UTA)

▼

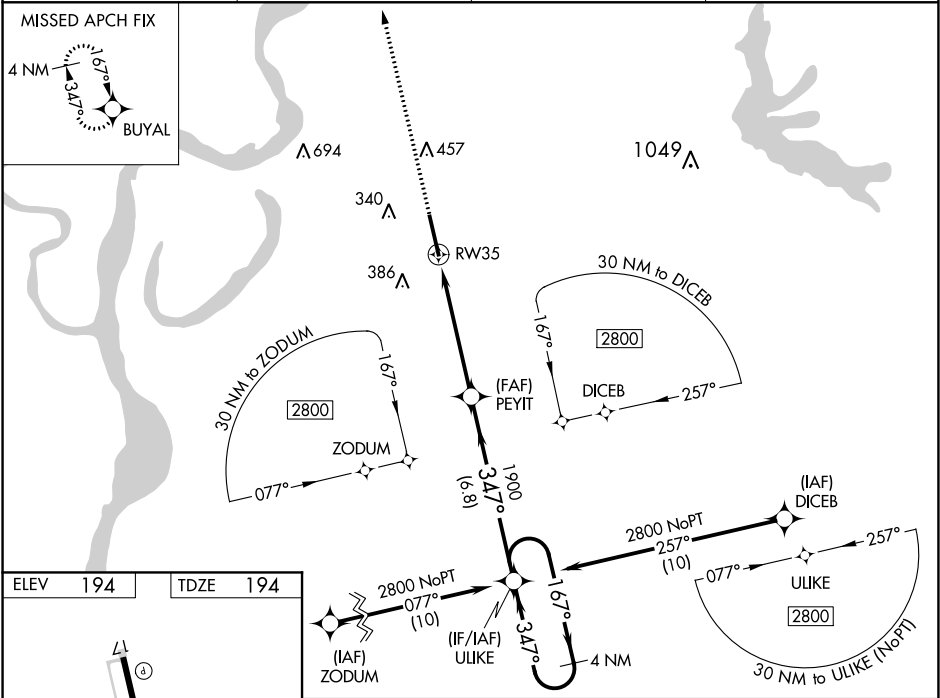
▲

For uncompensated Baro-VNAV systems, LNAV/VNAV NA below -15°C (5°F) or above 42°C (107°F). For inop MALSR, increase LNAV/VNAV all Cats visibility to ¾ mile. DME/DME RNP-0.3 NA. Baro-VNAV and VDP NA when using Memphis altimeter setting. When local altimeter setting not received, use Memphis altimeter setting and increase LPV DA to 480, LNAV/VNAV DA to 530, and all MDA 100 feet; increase LNAV/VNAV visibility all Cats ½ mile, increase LNAV Cat C, D and Circling Cat C visibility ¼ mile. For inop MALSR when using Memphis altimeter setting, increase LPV all Cats visibility to ¾ mile.

MALSR

MISSED APPROACH:
Climb to 2800 direct
BUYAL and hold.

AWOS-3 118.075	MEMPHIS APP CON 119.1 291.6	CLNC DEL 118.9	UNICOM 123.0 (CTAF) 0
--------------------------	---------------------------------------	--------------------------	---------------------------------



2800 BUYAL		VGSI and RNAV glidepath not coincident (VGSI Angle 3.00/TCH 47).		ULIKE 4 NM Holding Pattern	
*LNAV only.		*1.3 NM to RW35		GP 3.00° TCH 43	
		PEYIT 1900		167° → 2800	
				← 347°	
CATEGORY		A		B	
LPV DA		394-½		200 (200-½)	
LNAV/VNAV DA		444-½		250 (300-½)	
LNAV MDA		640-½ 446 (500-½)		640-7/8 446 (500-7/8)	
CIRCLING		680-1 486 (500-1)		700-1½ 760-2 506 (600-1½) 566 (600-2)	