

| | | |
|--|------------------------|---|
| LOC I-UTA 110.95 Chan 46 (Y) | APP CRS 347° | Rwy Idg 8500 TDZE 194 Apt Elev 194 |
|--|------------------------|---|

ILS or LOC RWY 35
TUNICA MUNI (UTA)

V
A

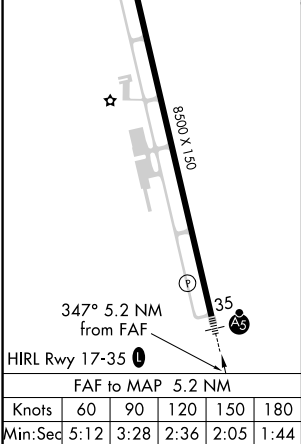
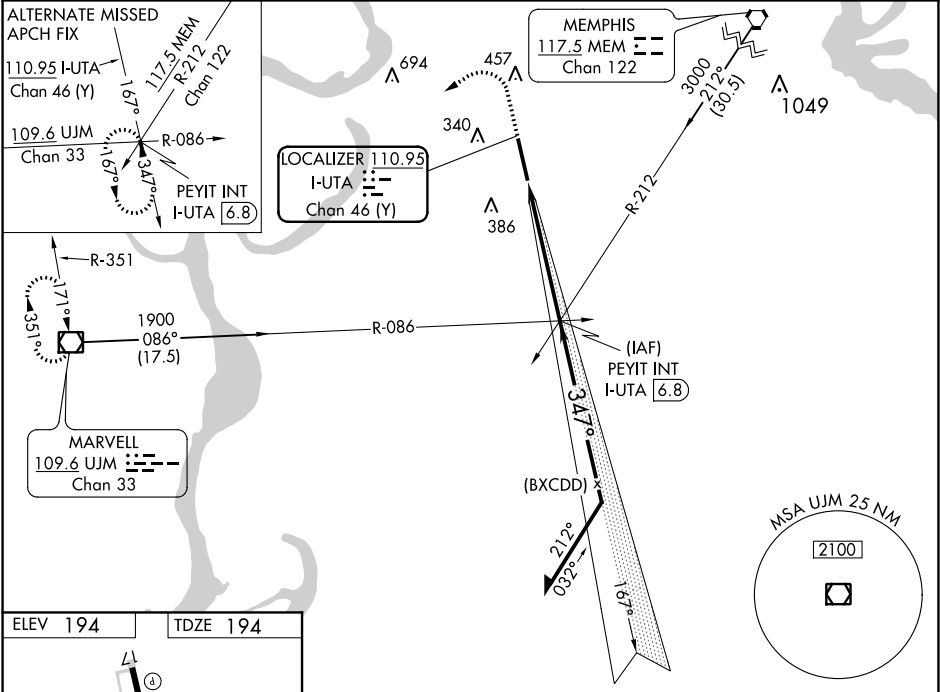
VDP NA with Memphis altimeter setting. When local altimeter not received, use Memphis altimeter setting and increase S-ILS 35 DA to 480 and all MDA 100 feet, increase S-LOC 35 Cats C and D and Circling Cat C visibility ¼ mile. For inoperative MALSR when using Memphis altimeter setting increase S-ILS 35 all Cats visibility to 1 mile.




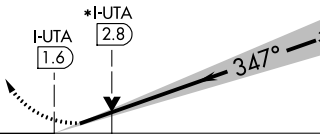
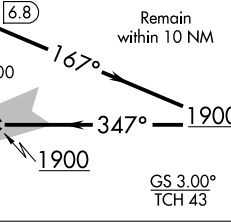
MALSR

A5

MISSED APPROACH: Climb to 700 then climbing left turn to 1900 direct UJM VOR/DME and hold.

| | | | |
|--------------------------|---------------------------------------|--------------------------|-------------------------------|
| AWOS-3 118.075 | MEMPHIS APP CON 119.1 291.6 | CLNC DEL 118.9 | UNICOM 123.0 (CTAF) |
|--------------------------|---------------------------------------|--------------------------|-------------------------------|



| | | | | | | |
|---|---|---|---|-----------------------|--|-------------------|
| 700 | 1900 | UJM | VGSI and ILS glidepath not coincident (VGSI Angle 3.00/TCH 47). | | | |
|  |  |  | | | | |
| *LOC only. | | | | | | |
|  | | |  | | | |
| CATEGORY | A | | B | C | | D |
| S-ILS 35 | 394-1/2 200 (200-1/2) | | | | | |
| S-LOC 35 | 640-1/2 446 (500-1/2) | | | 640-7/8 446 (500-7/8) | | |
| CIRCLING | 680-1 486 (500-1) | | | 700-1/2 506 (600-1/2) | | 760-2 566 (600-2) |

SC-4, 03 DEC 2020 to 31 DEC 2020

SC-4, 03 DEC 2020 to 31 DEC 2020